



YONGGU 

地址：广东佛山南海大沥岭南路 75 号伟业国际大厦 24 楼  
电话：0086 (0757) 85519767  
网址：<http://www.yonggu-enclosure.com>  
邮箱：[vip@yonggu-enclosure.com](mailto:vip@yonggu-enclosure.com)

永锢  
壳体

YONGGU  
2024



# COMPANY

## 公司简介

广东永钶电子机械技术有限公司（简称：永钶壳体）成立于2004年。集团总部位于广东省佛山市南海区大沥镇伟业大厦24层。我们的智能制造基地占地12000平方米，广东江门联东U谷国际企业港工业园区，拥有160多台最先进的全数字化数控加工设备、全自动激光切割机、全自动研磨机、全自动喷砂机 and 全自动氧化线；专业生产各种规格的铝外壳产品、铝机箱、铝合金开关面板、车载电脑机盒、DIY机箱，功放面板、屏蔽箱、以及各种规格的旋钮和机脚等产品。

秉承个性化定制、柔性化生产的经营理念，配备JIT实时全数字化智能生产和高效的供应链体系。为客户提供全面的设计服务，涵盖整个产业链的生产和智能制造。作为的一站式壳体解决方案服务商，我们的使命是：“您把想法交给我，我把产品交给您”，我们致力提供365\*24全天候服务。

Guangdong Yongqi Electronic Machinery Technology Co., Ltd. (hereinafter referred to as Yongqi Shell) was established in 2004. The headquarters of the group is located on the 24th floor of Weiye Building, Dali Town, Nanhai District, Foshan City, Guangdong Province. Our intelligent manufacturing base covers an area of 12,000 square meters, Guangdong Jiangmen Liandong U Valley International Enterprise Port Industrial Park, with more than 160 sets of the most advanced fully digital CNC machining equipment, automatic laser cutting machine, automatic grinding machine, automatic sandblasting machine and automatic oxidation line; Specializing in the production of various specifications of aluminum shell products, aluminum chassis, aluminum alloy switch panels, vehicle computer boxes, DIY chassis, power amplifier panels, shielding boxes, as well as various specifications of knobs and feet and other products.

Adhering to the business philosophy of personalized customization and flexible production, it is equipped with JIT real-time digital intelligent production and efficient supply chain system. Provide customers with comprehensive design services, covering the production and intelligent manufacturing of the entire industrial chain. As a one-stop shell solution service provider, our mission is: "You leave the idea to me, I leave the product to you", and we are committed to providing 365\*24 all-weather service.

## 公司简介

### COMPANY PROFILE

FOSHAN NANHAI YONGQU HARDWARE PRODUCTS CO., LTD.  
The Professional Manufacturer in Aluminum Enclosure  
www.yongqubox.com

## 03

### Z C 系列 19 英寸标准钣金机箱 ZC SERIES 19 INCH STANDARD SHEET METAL CHASSIS

FOSHAN NANHAI YONGQU HARDWARE PRODUCTS CO., LTD.  
The Professional Manufacturer in Aluminum Enclosure  
www.yongqubox.com

### Z G 系列 非标钣金机箱 ZG SERIES NON-STANDARD SHEET METAL CHASSIS

FOSHAN NANHAI YONGQU HARDWARE PRODUCTS CO., LTD.  
The Professional Manufacturer in Aluminum Enclosure  
www.yongqubox.com

## 13

## 19

## 技术说明

### TECHNICAL NOTES

FOSHAN NANHAI YONGQU HARDWARE PRODUCTS CO., LTD.  
The Professional Manufacturer in Aluminum Enclosure  
www.yongqubox.com

## 01

### 2024 年 中 新 品 NEW IN 2024

FOSHAN NANHAI YONGQU HARDWARE PRODUCTS CO., LTD.  
The Professional Manufacturer in Aluminum Enclosure  
www.yongqubox.com

## 05

## 09

### Z E 系列 非标钣金壳体 ZE SERIES NON-STANDARD SHEET METAL SHELL

FOSHAN NANHAI YONGQU HARDWARE PRODUCTS CO., LTD.  
The Professional Manufacturer in Aluminum Enclosure  
www.yongqubox.com

### Z S 系列 钣金散热壳体 ZS SERIES SHEET METAL HEAT DISSIPATION HOUSING

FOSHAN NANHAI YONGQU HARDWARE PRODUCTS CO., LTD.  
The Professional Manufacturer in Aluminum Enclosure  
www.yongqubox.com

## 49

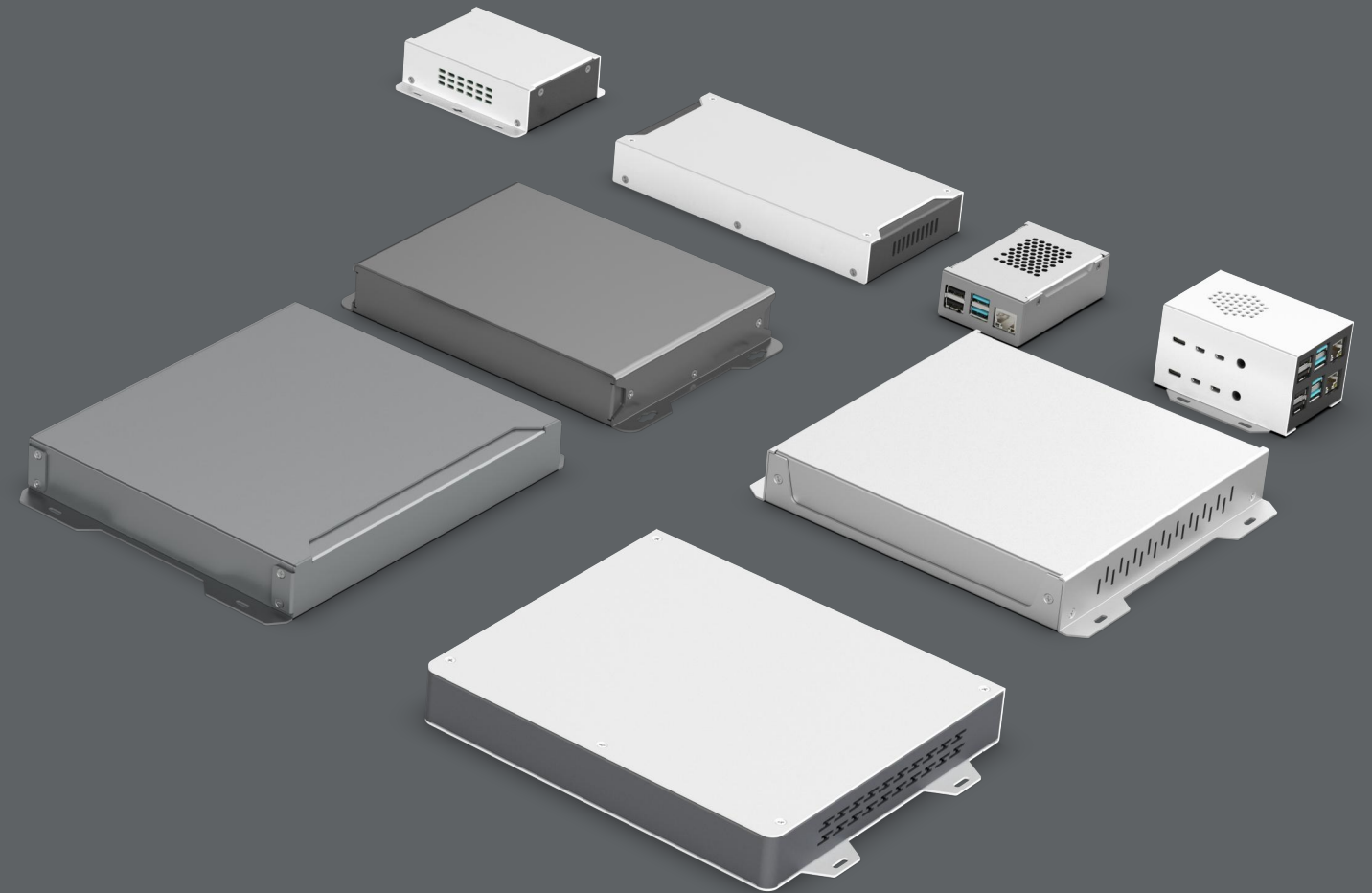
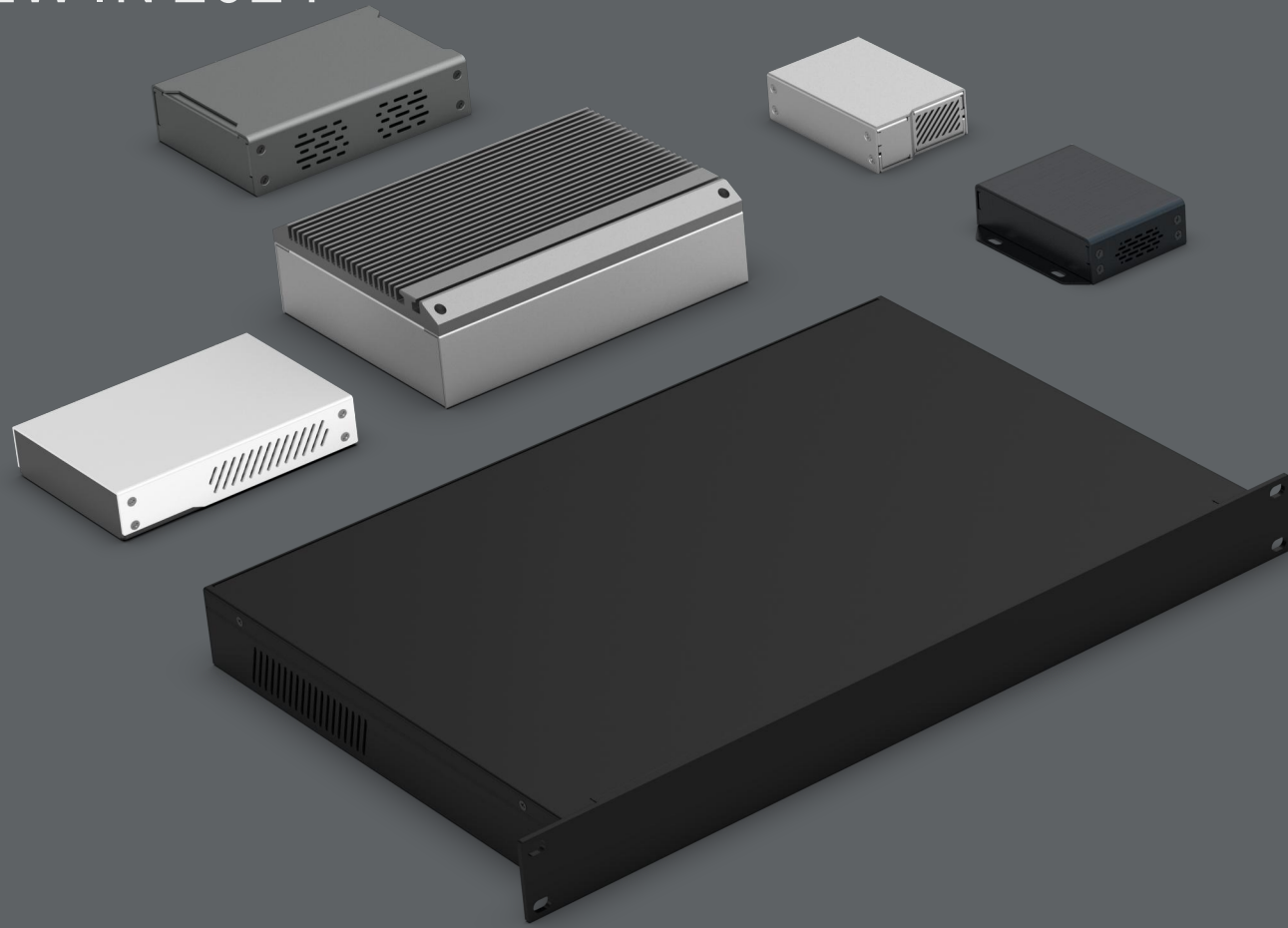


更多详细信息请登陆本公司官方网站[www.yongqubox.com](http://www.yongqubox.com)，或咨询相关人员了解。  
For more details, please visit the company's official website [www.yongqubox.com](http://www.yongqubox.com) or consult relevant personnel.



# 2024年中新品

## NEW IN 2024



## PRODUCT

新品研发：

### 引领市场潮流，共创美好未来

2024年上半年，我们汇聚精英力量，开发了一系列新产品，这些产品均主要采用钣金弯折的方式进行生产，进一步降低了成本，搭配我们的阳极氧化工艺以及全新的粉末喷涂工艺，为市场提供更高性价比、颜色更丰富的壳体，给我们的客户提供更多的选择。

**ZC系列：**19英寸标准机箱，对标永锢-C系列19英寸标准机箱，将C系列产品以钣金弯折的加工方式实现生产，作为C系列19英寸标准机箱的降本方案，为客户提供更实惠的选择。

**ZG系列：**对标永锢-G系列多功能工业机箱，将G系列转换成钣金的形式，用更少的零部件，提供多款造型及可灵活定制的尺寸，其成本更低，安装更方便。

**ZE系列：**中小尺寸非标钣金壳体，更丰富更全面的自定义尺寸和构造的钣金壳体。

**ZS系列：**钣金散热壳体，将钣金壳体与铝合金散热齿结合，为产品提供更强大的散热能力。

本次新品发布，主要以功能好用实用，造型美观，高性价比为设计理念，致力于为全球领先电子设备制造商提供一流的壳体解决方案，为客户提升品牌创造价值，为社会进步，科技发展保驾护航。

### Lead the market trend and create a better future together

In the first half of 2024, we gathered elite forces to develop a series of new products, which are mainly produced by sheet metal bending Reduced cost, combined with our anodizing process and new powder coating process, to provide the market with more cost-effective, more colorful housings, to us of customers offer more choices.

**ZC series:** 19-inch standard chassis, benchmarking YONGU C series 19-inch standard chassis, the C series products are produced by sheet metal bending processing method as the C series The cost reduction solution of the 19-inch standard chassis provides customers with a more affordable choice.

**ZG series:** Benchmarking the YONGU G series multi-functional industrial chassis, the G series is converted into the form of sheet metal, with fewer parts, providing a variety of shapes and flexible customization The size of the system, its cost is lower, and the installation is more convenient.

**ZE series:** small and medium-sized non-standard sheet metal shells, richer and more comprehensive sheet metal shells with custom sizes and structures.

**ZS series:** sheet metal heat dissipation shell, which combines sheet metal housing with aluminum alloy heat dissipation teeth to provide more powerful heat dissipation capacity for the product.

This new product release is mainly based on the design concept of easy to use and practical, beautiful appearance and high cost performance, and is committed to providing first-class products for the world's leading electronic equipment manufacturers The shell solution creates value for customers to enhance their brands, and escorts social progress and scientific and technological development.

## 材质与工艺

### Materials and workmanship

这一次产品我们提供了丰富的材料与工艺搭配方案，钣金产品成本相比现有产品进一步下探，性价比更高，材质：有SPCC冷轧板和5052-H32铝板。表面处理：SPCC冷轧板-表面粉末喷涂，铝板-阳极氧化与粉末喷涂两种工艺。并且为壳体提供尺寸定制、开孔、图文定制等服务，以下为示例。

This time we provide a wealth of materials and process matching solutions, the cost of sheet metal products is further explored compared with the existing products, more cost-effective, material: SPCC cold-rolled plate and 5052-H32 aluminum plate. Surface treatment: SPCC cold-rolled plate - surface powder coating, aluminum plate - anodizing and powder coating two processes. And provide size customization, opening, graphic customization and other services for the shell, the following is an example.



喷涂-细亚光面  
Spraying - fine matte surface



喷涂-粗磨砂哑光  
Spray - Coarse Scrub matte



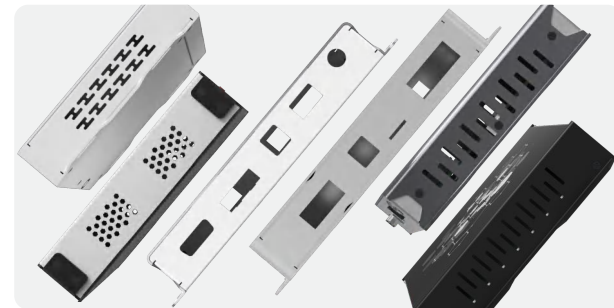
金属拉丝  
Brushed metal



喷砂氧化（铝板）  
Sandblasted oxidation (aluminum)



图文定制（UV打印/激光雕刻）  
Pattern customization(UV printing/Laser engraving)



各种开孔定制  
Custom cut-outs

## 定制流程

### Customized processes

本公司加工设备先进、齐全。能满足各种不同客户加工要求，您可以提供图纸，参考实物，文档文件等，进行沟通对接后，我们可以为您提供设计以及加工服务。

The company's processing equipment is advanced and complete. To meet the processing requirements of various customers, you can provide drawings, reference objects, documents, etc., we can provide you with processing and design services.

01  
沟通报价  
Communicate  
quotes

您的需求  
Your needs

02  
签订合同  
Sign the  
contract

方案输出  
Scenario output

03  
设计规划  
Design  
planning

样品提交  
Sample submission

04  
确认生产  
Confirm  
production

## 定制钣金产品的颜色

### Custom color of sheet metal products

我们推出了全新的粉末喷涂以及阳极氧化工艺，可赋予铝合金产品丰富艳丽的色彩，并形成保护层，我们可以根据您的需求改色，可选粉末喷涂哑光、粉末喷涂粗磨砂、喷砂氧化、拉丝氧化、或单氧化。更多配色可咨询客服进行了解，或向我们工程师提供潘通色号。

We have introduced a new powder coating and anodizing process, which can give aluminum alloy products rich and vivid colors and form a protective layer, we can change the color according to your needs, choose from powder coating matte, powder coating coarse matte, sandblasting oxidation, brushed oxidation, or single oxidation. For more color matching, please consult customer service for information, or provide our engineers with Pantone color number.



金属拉丝  
Metal brushing



磨砂效果  
Matte effect

## 表面图文定制

### Surface graphic customization



激光雕刻，可制作黑底白字或白底黑字  
Laser engraving, which can make white characters on a black background or black characters on a white background



UV打印，可制作颜色丰富的图案或文字  
UV printing for colorful patterns or text



更多详细信息请登陆[本公司官方网站www.yonggubox.com](http://www.yonggubox.com)，或咨询相关人员了解。  
For more details, please visit the company's official website [www.yonggubox.com](http://www.yonggubox.com) or consult relevant personnel.



# ZE101A

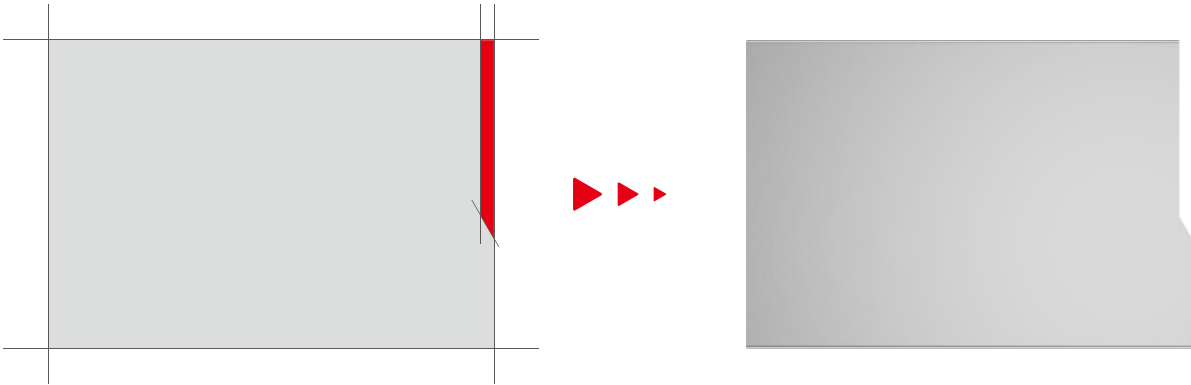
全新中、小壳体钣金设计



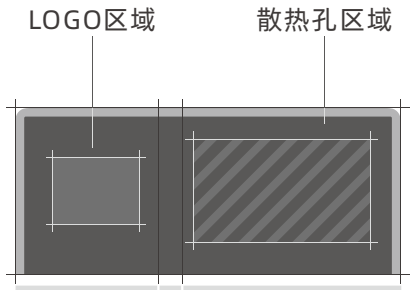
## 方案灵感 INSPIRATION

ZE101A是一款造型风格偏方正且非对称的钣金壳体。产品主体造型做了一次切割以增加壳体的辨识度，散热孔只布局在产品的一侧。

The ZE101A is a rectangular and asymmetrical sheet metal housing. The main shape of the product is cut once to increase the identification of the shell, and the heat dissipation hole is only placed on one side of the product.



## 产品细节 DETAILS



外观设计。对主体造型的一次切割使得产品正面被分为通过一个斜面连接的两个区域——LOGO区域和散热孔区域。其中，这两区域的外轮廓与边缘部分保持等距关系。

The exterior design. A cut of the main shape allowed the front of the product to be divided into two areas connected by an inclined plane - the LOGO area and the heat dissipation hole area. Among them, the outer contour of these two regions maintains an equidistant relationship with the edge part.



品牌标识。正面是产品的视觉中心，品牌标识放置在正面有助于推广品牌形象。

Brand identity. The front is the visual center of the product, and the brand identity is placed on the front to help promote the brand image.

自定义面板。产品侧面为接口面板区域，客户可根据自己产品的实际功能和PCB规格进行开孔。

Customize the panel. The side of the product is an interface panel area, and customers can make holes according to the actual functions of their products and PCB specifications.



## 爆炸图 EXPLOSIVE VIEW

### 1.上壳

材质：5052-H32/SPCC  
组成用量：1PCS

### 2.下壳

材质：5052-H32/SPCC  
组成用量：1PCS

### 4.压铆螺母镀白锌M3

材质：碳钢  
组成用量：8PCS

### 3.侧板

材质：5052-H32/SPCC  
组成用量：1PCS

### 5.M3×6内六角杯头螺丝

材质：碳钢  
组成用量：8PCS



产品尺寸：100×70×30

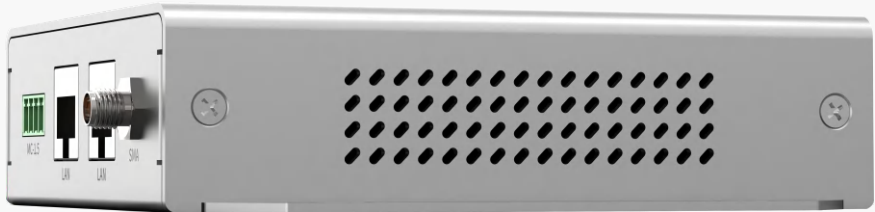
## 物料表 MATERIALS

序号(S/N)	名称(Part Name)	表面处理(Finish)	材料(Material)	数量(QTY)
1	上壳/Top Shell	阳极氧化/Anodizing	5052-H32/SPCC	1
2	下壳/Bottom Shell	阳极氧化/Anodizing	5052-H32/SPCC	1
3	侧板/Side Shell	阳极氧化/Anodizing	5052-H32/SPCC	1
4	压铆螺母镀白锌M3/S-M3-1-ZI	镀锌/galvanization	碳钢/Carbon Stell	8
5	M3×6内六角杯头螺丝/GB-T-70.1-2000-S-NL-M3	镀白镍/White Nickel Plating	碳钢/Carbon Stell	8

注:同规格外观SPCC材质型号图纸版本：YG-ZE201A

# ZE102A

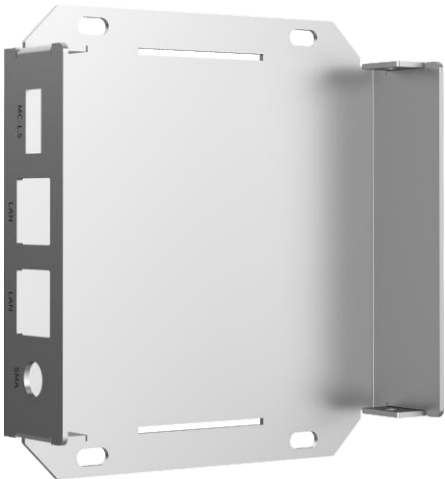
全新中、小壳体钣金设计



## 方案灵感 INSPIRATION

ZE102A是一款自带壁挂安装孔的钣金壳体，其中4个安装孔位排布在产品的左右两侧。此外，为尽可能减少螺丝数量且同时保证壳体的稳固性，产品下壳还做了一个方便上壳嵌入的槽口。

ZE102A is a sheet metal housing with wall mounting holes, four of which are arranged on the left and right sides of the product. In addition, in order to minimize the number of screws and at the same time ensure the stability of the housing, the lower shell of the product is also made a convenient slot for the upper shell to be inserted.



• 壁挂效果图与孔位展示

## 产品细节 DETAILS

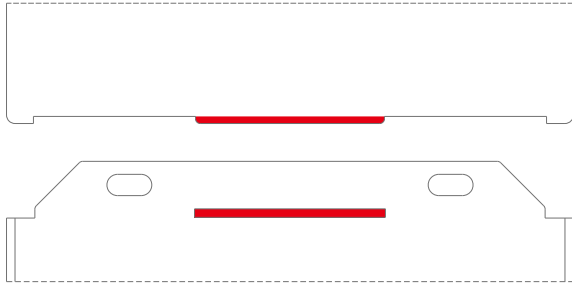
自定义面板。产品正面为接口面板区域，客户可根据自己产品的实际功能和PCB的规格进行开孔。

Customize the panel. The front of the product is the interface panel area, and customers can make holes according to the actual functions of their products and the specifications of the PCB.



品牌标识。产品顶部为品牌logo区域，客户可根据自己的需求定制UV打印。

Brand identity. The top of the product is the brand logo area, customers can customize UV printing according to their needs.



槽口设计。在不增加成本的情况下，在钣金壳体上设计了一对槽口以增加产品装配的稳固性。

Notch design. Without increasing the cost, a pair of notches are designed on the sheet metal housing to increase the stability of the product assembly.

## 爆炸图 EXPLOSIVE VIEW

### 1.上壳

材质：5052-H32/SPCC  
组成用量：1PCS

### 2.下壳

材质：5052-H32/SPCC  
组成用量：1PCS

### 3.压铆螺母镀白锌M3

材质：碳钢  
组成用量：4PCS

### 4.M3×6内六角杯头螺丝

材质：碳钢  
组成用量：4PCS

产品尺寸：120×100×31.5

## 物料表 MATERIALS

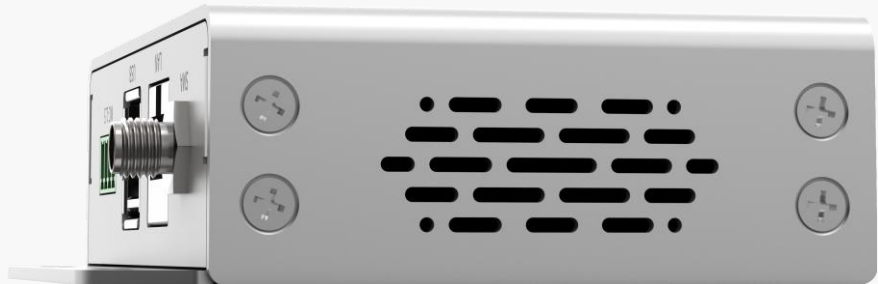
序号(S/N)	名称(Part Name)	表面处理(Finish)	材料(Material)	数量(QTY)
1	上壳/Top Shell	阳极氧化/Anodizing	5052-H32/SPCC	1
2	下壳/Bottom Shell	阳极氧化/Anodizing	5052-H32/SPCC	1
3	压铆螺母镀白锌M3/S-M3-1-ZI	镀锌/galvanization	碳钢/Carbon Stell	4
4	M3×6内六角杯头螺丝/GB-T-70.1-2000-S-NL-M3	镀白镍/White Nickel Plating	碳钢/Carbon Stell	4

注:同规格外观SPCC材质型号图纸版本：YG-ZE202A



# ZE103A

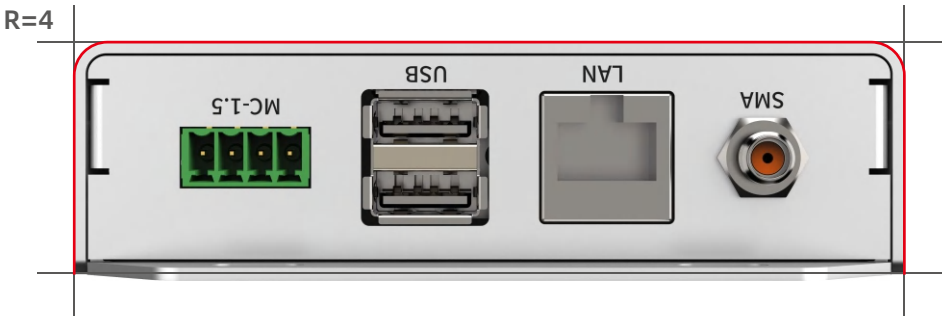
全新中、小壳体钣金设计



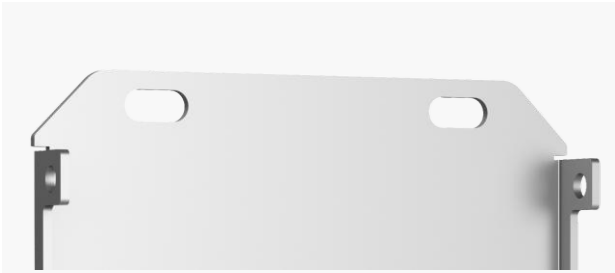
## 方案灵感 INSPIRATION

ZE103A是一款自带壁挂安装孔的钣金壳体，其中两个安装孔位分布在产品的一侧。为使产品在整体上偏向于圆润的造型风格，所以产品的上壳体采用了4mm的折弯半径。

The ZE103A is a sheet metal housing with wall mounting holes, two of which are located on one side of the product. In order to make the product as a whole tend to a rounded styling style, the upper shell of the product uses a bending radius of 4mm.



## 产品细节 DETAILS



壁挂安装。产品壁挂安装槽与产品是一体设计的，这有效减少了产品装配步骤。

Wall mount. The product wall mounting slot is integrated with the product design, which effectively reduces the product assembly steps.



自定义面板。产品顶部为接口面板区域，客户可根据自己产品的实际功能和PCB规格进行开孔。

Customize the panel. The side of the product is an interface panel area, and customers can make holes according to the actual functions of their products and PCB specifications.



品牌标识。产品正面为品牌logo区域，客户可根据自己的需求定制UV打印。

Brand identity. The front of the product is the brand logo area, customers can customize UV printing according to their needs.

## 爆炸图 EXPLOSIVE VIEW

### 2.下壳

材质：5052-H32/SPCC  
组成用量：1PCS

### 4.压铆螺母镀白锌M3

材质：碳钢  
组成用量：8PCS

### 1.上壳

材质：5052-H32/SPCC  
组成用量：1PCS

### 3.侧板

材质：5052-H32/SPCC  
组成用量：1PCS

### 5.M3×6内六角杯头螺丝

材质：碳钢  
组成用量：8PCS

产品尺寸：100×70×28

## 物料表 MATERIALS

序号(S/N)	名称(Part Name)	表面处理(Finish)	材料(Material)	数量(QTY)
1	上壳/Top Shell	阳极氧化/Anodizing	5052-H32/SPCC	1
2	下壳/Bottom Shell	阳极氧化/Anodizing	5052-H32/SPCC	1
3	侧板/Side Shell	阳极氧化/Anodizing	5052-H32/SPCC	1
4	压铆螺母镀白锌M3/S-M3-1-ZI	镀锌/galvanization	碳钢/Carbon Stell	8
5	M3×6内六角杯头螺丝/GB-T-70.1-2000-S-NL-M3	镀白镍/White Nickel Plating	碳钢/Carbon Stell	8

注:同规格外观SPCC材质型号图纸版本：YG-ZE203A

# ZE104A

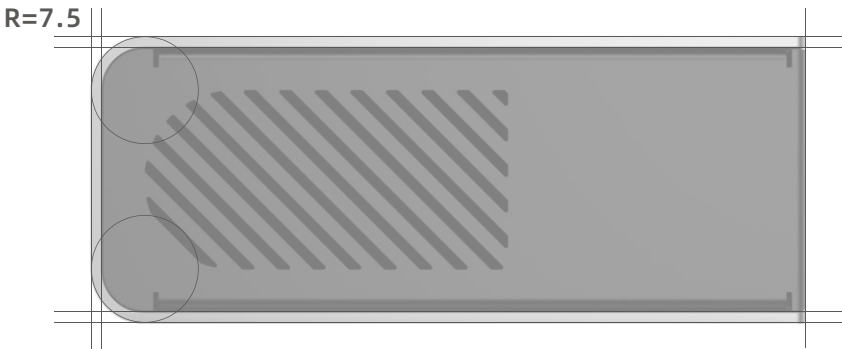
全新中、小壳体钣金设计



## 方案灵感 INSPIRATION

ZE104A是一款造型风格偏圆润的钣金壳体，产品的上壳体采用了7.5mm的折弯半径。产品侧面的散热孔也依附于这种大圆角的造型风格。这种大圆角的造型风格也影响着产品侧面散热孔的轮廓。

The ZE104A is a rounded sheet metal shell with a bending radius of 7.5mm on the upper shell. The heat dissipation hole on the side of the product is also attached to this large rounded corner style. This style of large rounded corners also affects the outline of the heat dissipation hole on the side of the product.



## 产品细节 DETAILS

品牌标识。产品正面为品牌logo区域，客户可根据自己的需求定制UV打印。UV打印具有印刷复杂文字和图案且不受颜色限制等优点。

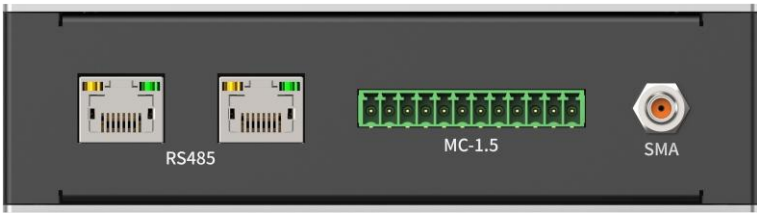
Brand identity. The front of the product is the brand logo area, customers can customize UV printing according to their needs. UV printing has the advantages of printing complex text and patterns and is not limited by color.



## 产品视图 RENDERINGS



左视图



正视图

散热孔。侧面散热孔的外轮廓随着产品大型的外轮廓而变化，这样的处理使得产品在整体上更为协调。此外，孔阵面积可根据产品实际的散热需求而定。

Heat dissipation hole. The external profile of the side heat dissipation hole changes with the large external profile of the product, and this treatment makes the product more coordinated on the whole. In addition, the hole array area can be determined according to the actual heat dissipation requirements of the product.

## 爆炸图 EXPLOSIVE VIEW



产品尺寸：145×100×40

## 物料表 MATERIALS

序号(S/N)	名称(Part Name)	表面处理(Finish)	材料(Material)	数量(QTY)
1	上壳/Top Shell	阳极氧化/Anodizing	5052-H32/SPCC	1
2	侧板/Side Shell	阳极氧化/Anodizing	5052-H32/SPCC	1
3	下壳/Bottom Shell	阳极氧化/Anodizing	5052-H32/SPCC	1
4	压铆螺母镀白锌M3/S-M3-1-ZI	镀锌/galvanization	碳钢/Carbon Stell	6
5	M3×6内六角杯头螺丝/GB-T-70.1-2000-S-NL-M3	镀白镍/White Nickel Plating	碳钢/Carbon Stell	6

注:同规格外观SPCC材质型号图纸版本：YG-ZE204A



# ZE105A

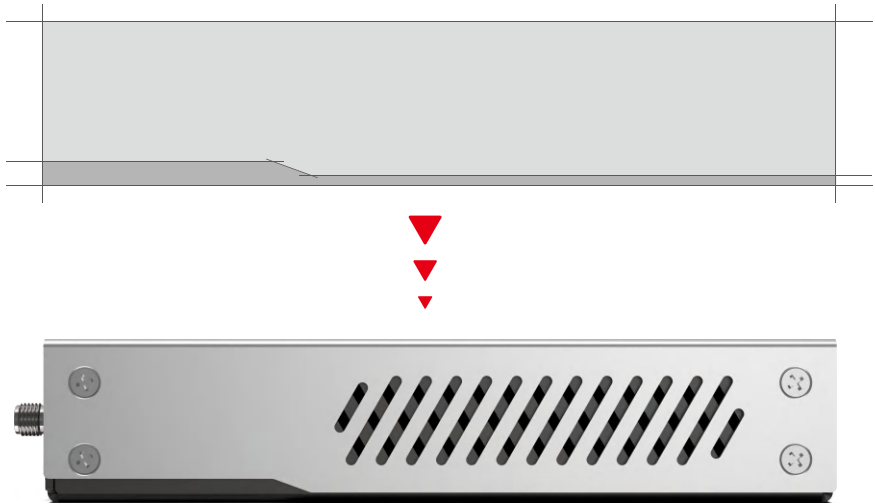
全新中、小壳体钣金设计



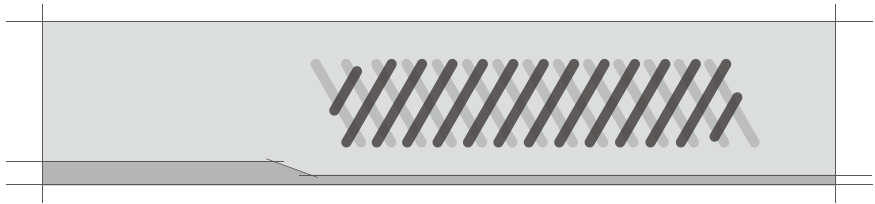
## 方案灵感 INSPIRATION

ZE105A是一款造型风格偏方正的钣金壳体。为增加壳体的辨识度，两个壳体部分采用了不同颜色以突出壳体侧面的造型特征。此外，上、下壳体侧面的重叠散热孔增加了孔阵的丰富性。

ZE105A is a rectangular sheet metal shell. In order to increase the recognition of the shell, different colors are used in the two parts of the shell to highlight the modeling characteristics of the side of the shell. In addition, the overlapping heat dissipation holes on the sides of the upper and lower shells increase the richness of the hole array.



## 产品细节 DETAILS



散热孔。产品的散热孔是由上、下壳体两个部分组成，实际的散热效果由两部分开孔的重合部分决定。这种重叠的孔阵可以丰富产品侧面的造型，使产品更具层次感。

Heat dissipation hole. The heat dissipation hole of the product is composed of two parts of the upper and lower shell, and the actual heat dissipation effect is determined by the coincidence part of the two separate holes. This overlapping hole array can enrich the shape of the side of the product and make the product more layered.



品牌标识。产品顶部为品牌logo区域，客户可根据自己的需求定制UV打印。

Brand identity. The top of the product is the brand logo area, customers can customize UV printing according to their needs.

自定义面板。产品正面为接口面板区域，客户可根据自己产品的实际功能和PCB规格进行开孔。

Customize the panel. The front of the product is the interface panel area, and customers can make holes according to the actual function of their products and PCB specifications.



## 爆炸图 EXPLOSIVE VIEW

### 1.上壳

材质：5052-H32/SPCC  
组成用量：1PCS

### 2.下壳

材质：5052-H32/SPCC  
组成用量：1PCS

### 3.M3×6内六角杯头螺丝

材质：碳钢  
组成用量：8PCS

### 4.压铆螺母镀白锌M3

材质：碳钢  
组成用量：8PCS

产品尺寸：145×100×30

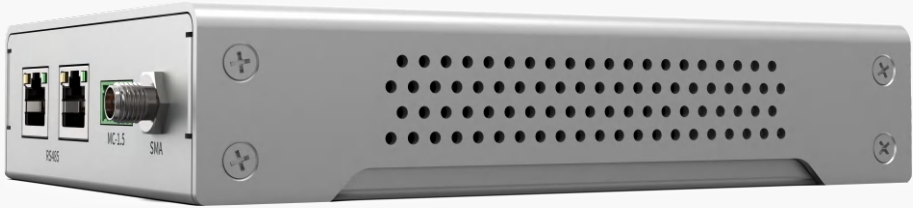
## 物料表 MATERIALS

序号(S/N)	名称(Part Name)	表面处理(Finish)	材料(Material)	数量(QTY)
1	上壳/Top Shell	阳极氧化/Anodizing	5052-H32/SPCC	1
2	下壳/Bottom Shell	阳极氧化/Anodizing	5052-H32/SPCC	1
3	压铆螺母镀白锌M3/S-M3-1-ZI	镀锌/galvanization	碳钢/Carbon Stell	8
4	M3×6内六角杯头螺丝/GB-T-70.1-2000-S-NL-M3	镀白镍/White Nickel Plating	碳钢/Carbon Stell	8

注:同规格外观SPCC材质型号图纸版本：YG-ZE205A

# ZE106A

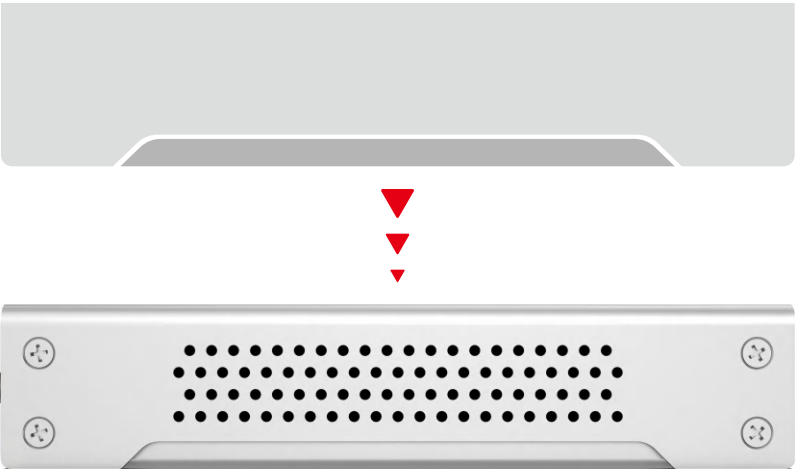
全新中、小壳体钣金设计



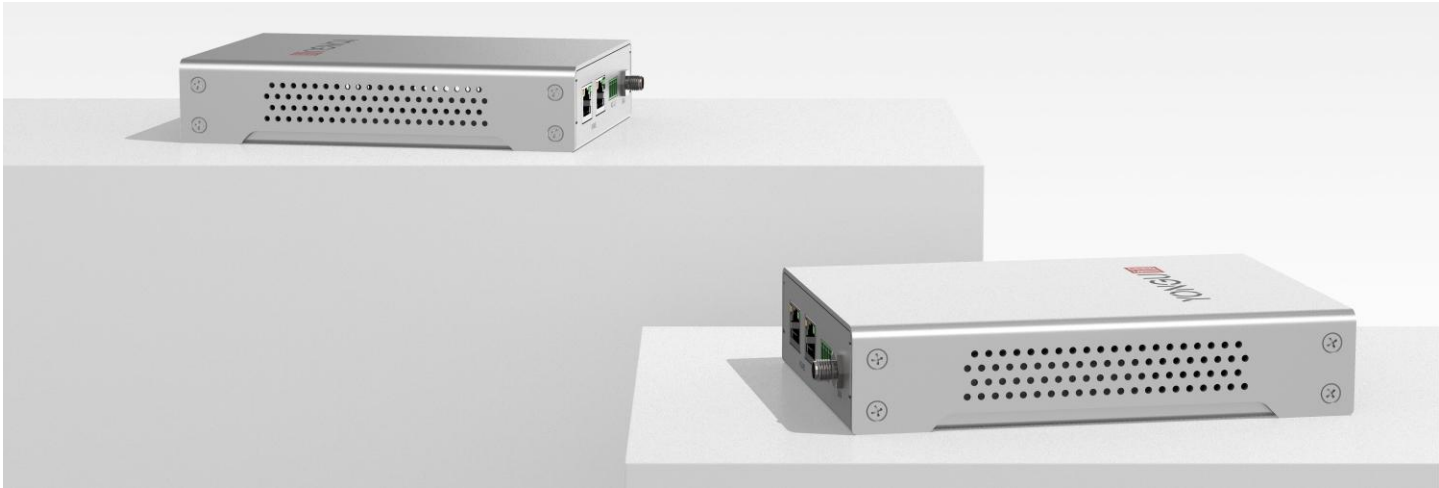
## 方案灵感 INSPIRATION

ZE106A是一款造型风格偏方正的钣金壳体。钣金的上壳体覆盖了绝大部分的钣金折弯结构，同时上壳体侧面的切割元素成为了产品外观最重要的造型特征。

The ZE106A is a rectangular sheet metal housing. The upper shell of the sheet metal covers most of the sheet metal bending structure, and the cutting element on the side of the upper shell has become the most important modeling feature of the product appearance.



## 产品效果 RENDERINGS



## 产品细节 DETAILS



UV打印（复色）。接口类型标识可以通过UV打印实现，字体和图案不受颜色的限制。

UV printing (multi-color). Interface type identification can be achieved through UV printing, fonts and patterns are not limited by color.



结构设计。考虑到产品外观的美观，用上壳体最大限度地覆盖钣金的折弯结构。

Structural design. Considering the beautiful appearance of the product, the shell is used to cover the bending structure of the sheet metal to the maximum extent.

- 更多定制内容或工艺细则可参考附页。

More customized content or process details can be found on the attached page.

## 爆炸图 EXPLOSIVE VIEW

### 2.下壳

材质：5052-H32/SPCC  
组成用量：1PCS

### 3.压铆螺母镀白锌M3

材质：碳钢  
组成用量：8PCS

### 1.上壳

材质：5052-H32/SPCC  
组成用量：1PCS

### 4.M3×6内六角杯头螺丝

材质：碳钢  
组成用量：8PCS

产品尺寸：145×100×30

## 物料表 MATERIALS

序号(S/N)	名称(Part Name)	表面处理(Finish)	材料(Material)	数量(QTY)
1	上壳/Top Shell	阳极氧化/Anodizing	5052-H32/SPCC	1
2	下壳/Bottom Shell	阳极氧化/Anodizing	5052-H32/SPCC	1
3	压铆螺母镀白锌M3/S-M3-1-ZI	镀锌/galvanization	碳钢/Carbon Stell	8
4	M3×6内六角杯头螺丝/GB-T-70.1-2000-S-NL-M3	镀白镍/White Nickel Plating	碳钢/Carbon Stell	8

注:同规格外观SPCC材质型号图纸版本：YG-ZE206A



# ZE107A

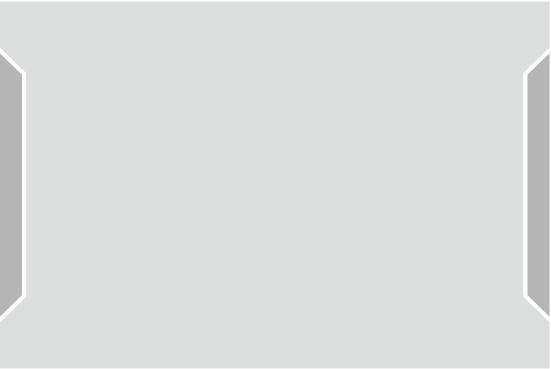
全新中、小壳体钣金设计



## 方案灵感 INSPIRATION

ZE107A产品的造型元素具有一定的对称性。为增加壳体的辨识度，产品上壳体的两侧都做了相同元素的切割。此外，将散热孔分隔为前、后两个部分也是为了适配于这种对称性。

The styling elements of ZE107A products have a certain symmetry. In order to increase the identification of the shell, the same elements are cut on both sides of the shell on the product. In addition, the heat dissipation hole is divided into two parts, the front and the back, in order to adapt to this symmetry.



- 产品顶部相同元素的切割以增加其辨识度。

## 产品细节 DETAILS

自定义面板。产品正面为接口面板区域，客户可根据自己产品的实际功能和PCB规格进行开孔。

Customize the panel. The front of the product is the interface panel area, and customers can make holes according to the actual function of their products and PCB specifications.

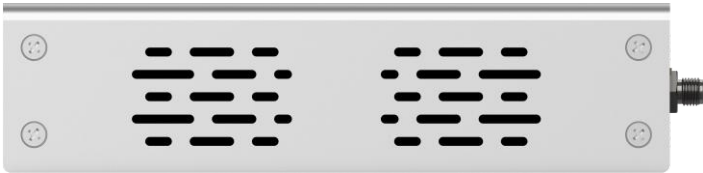


散热孔。产品两侧为散热孔区域，可根据对产品散热的需求程度决定孔阵面积。

Heat dissipation hole. The two sides of the product are heat dissipation hole areas, and the hole array area can be determined according to the demand for heat dissipation of the product.



## 产品视图 RENDERINGS



## 爆炸图 EXPLOSIVE VIEW

### 1.上壳

材质：5052-H32/SPCC  
组成用量：1PCS

### 3.压铆螺母镀白锌M3

材质：碳钢  
组成用量：8PCS

### 2.下壳

材质：5052-H32/SPCC  
组成用量：1PCS

### 4.M3×6内六角杯头螺丝

材质：碳钢  
组成用量：8PCS

产品尺寸：150×100×38

## 物料表 MATERIALS

序号(S/N)	名称(Part Name)	表面处理(Finish)	材料(Material)	数量(QTY)
1	上壳/Top Shell	阳极氧化/Anodizing	5052-H32/SPCC	1
2	下壳/Bottom Shell	阳极氧化/Anodizing	5052-H32/SPCC	1
3	压铆螺母镀白锌M3/S-M3-1-ZI	镀锌/galvanization	碳钢/Carbon Stell	8
4	M3×6内六角杯头螺丝/GB-T-70.1-2000-S-NL-M3	镀白镍/White Nickel Plating	碳钢/Carbon Stell	8

注:同规格外观SPCC材质型号图纸版本：YG-ZE207A

# ZE108A

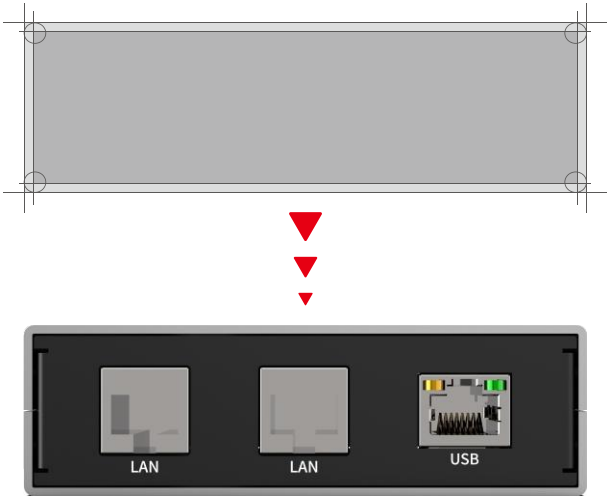
全新中、小壳体钣金设计



## 方案灵感 INSPIRATION

ZE108A是一款造型风格偏方正的钣金壳体。产品的上、下两个壳体通过前后侧板进行固定，这样的装配方式保证了产品侧面拥有4个相同的圆角。

The ZE108A is a rectangular sheet metal housing. The upper and lower shells of the product are fixed through the front and rear side panels, which ensures that the side of the product has four identical rounded corners.



## 产品细节 DETAILS



• 截面示意图

结构设计。两块钣金侧面的结构设计有助于增加其接触面积以增加产品装配的稳固性。

Structural design. The structural design of the two sheet metal sides helps to increase the contact area to increase the stability of the product assembly.



品牌标识。产品正面为品牌logo区域，客户可根据自己的需求定制UV打印。

Brand identity. The front of the product is the brand logo area, customers can customize UV printing according to their needs.



激光打标（单色）。接口类型标识可以通过激光打标实现，字体不会因环境关系自然消退。

Laser marking (monochrome). The interface type identification can be realized by laser marking, and the font will not fade naturally due to the environment.

## 爆炸图 EXPLOSIVE VIEW

### 2.侧板

材质：5052-H32/SPCC  
组成用量：2PCS

### 4.压铆螺母镀白锌M3

材质：碳钢  
组成用量：8PCS

### 3.下壳

材质：5052-H32/SPCC  
组成用量：1PCS

### 1.上壳

材质：5052-H32/SPCC  
组成用量：1PCS

### 4.M3×6内六角杯头螺丝

材质：碳钢  
组成用量：8PCS

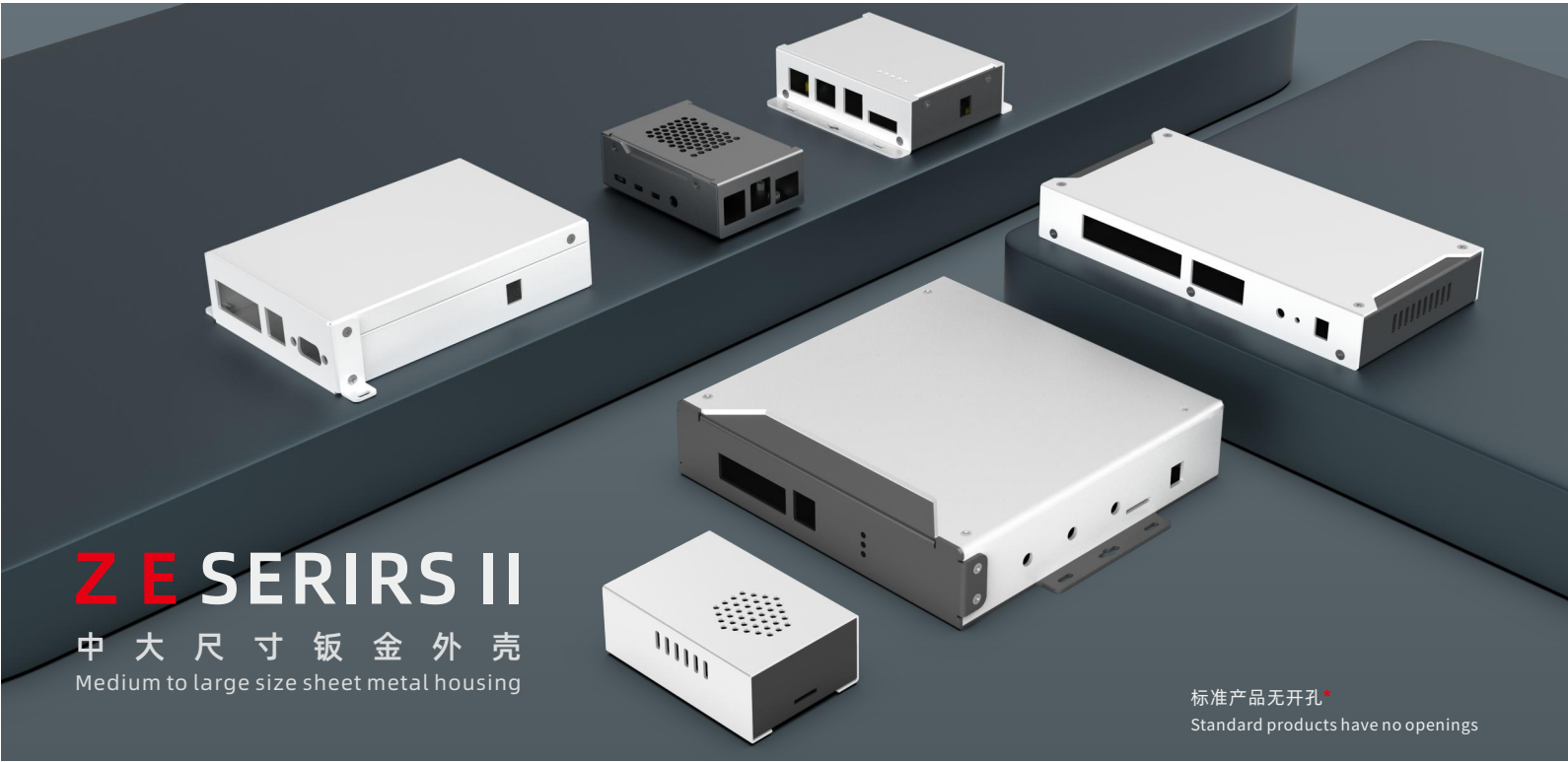
产品尺寸：145×100×30

## 物料表 MATERIALS

序号(S/N)	名称(Part Name)	表面处理(Finish)	材料(Material)	数量(QTY)
1	上壳/Top Shell	阳极氧化/Anodizing	5052-H32/SPCC	1
2	侧板/Side Shell	阳极氧化/Anodizing	5052-H32/SPCC	2
3	下壳/Bottom Shell	阳极氧化/Anodizing	5052-H32/SPCC	1
4	压铆螺母镀白锌M3/S-M3-1-ZI	镀锌/galvanization	碳钢/Carbon Stell	8
5	M3×6内六角杯头螺丝/GB-T-70.1-2000-S-NL-M3	镀白镍/White Nickel Plating	碳钢/Carbon Stell	8

注:同规格外观SPCC材质型号图纸版本：YG-ZE208A





# ZE SERIES II

中大尺寸钣金外壳  
Medium to large size sheet metal housing

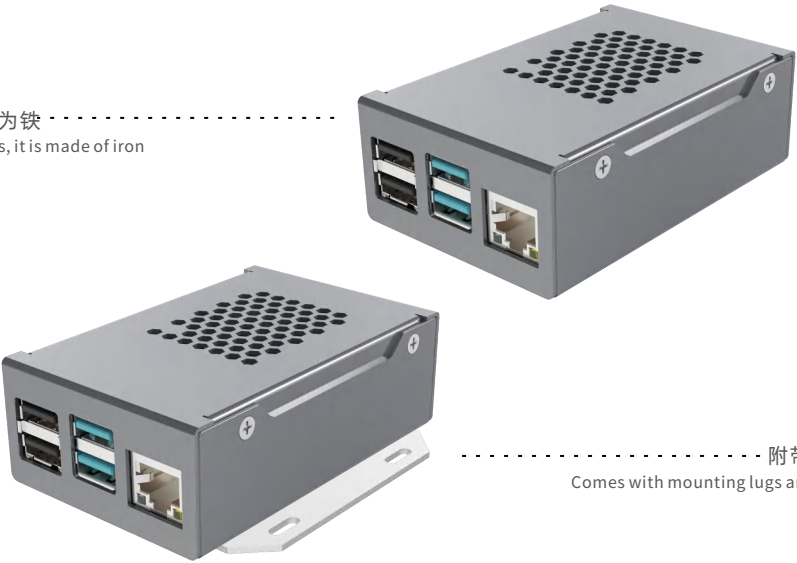
标准产品无开孔  
Standard products have no openings

## 设计说明 Design Description

钣金壳体第二批主要面向各类网关、路由器、树莓派等微型电脑控制器类产品，其拥有更自由的尺寸定制性，零件少易安装，壳体采用阳极氧化及喷涂工艺。产品区分：ZE为系列名称，113第一个数字代表材质，1代表铝板，2代表铁板，后面的13代表第13款造型，AorB代表无或有安装耳（例如ZE113A无安装耳铝板，ZE113B有安装耳铝板，ZE213B为有安装耳铁板），铁板厚度（1.2MM），铝板厚度（1.5-2.5MM），铁板只做粉末喷涂，铝板既可阳极氧化也粉末喷涂。

The second batch of sheet metal shells is mainly for all kinds of gateways, routers, Raspberry Pi and other microcomputer controller products, which have more free size customization, few parts and easy installation, and the shell adopts anodizing and spraying process. Product differentiation: ZE is the name of the series, the first number of 113 represents the material, 1 represents the aluminum plate, 2 represents the iron plate, the back 13 represents the 13th modeling, AorB stands for no or installed ears (for example, ZE113A has no mounting ear aluminum plate, ZE113B has an installation ear aluminum plate, ZE213B is an iron plate with installed ears), iron plate thickness (1.2MM), aluminum plate thickness (1.5-2.5MM), iron plate only powder coating, aluminum plate can be anodized and powder coated.

ZE213A  
不带安装耳、材质为铁  
Without mounting lugs, it is made of iron



ZE113B  
附带安装耳、材质为铝  
Comes with mounting lugs and is made of aluminum



同型号AB款用于区别有无安装耳，型号中的第一个数字代表材质，后面数字代表第N款造型  
The AB model of the same model is used to distinguish whether there are mounting ears or not, the first number in the model represents the material, and the following number represents the Nth model

ZE系列II提供6个造型样式，每个造型都可自定义尺寸  
The ZE series II offers 6 styling styles, each with customizable dimensions



ZE109



ZE110



ZE111



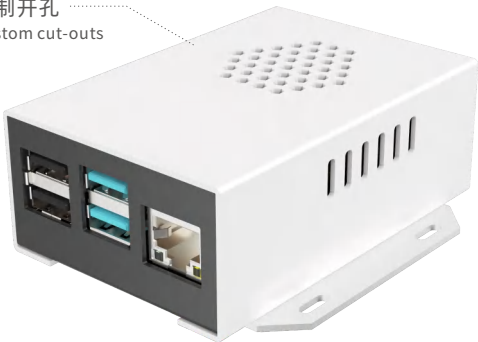
ZE112

无需开模，成本更低  
There is no need to open the mold, and the cost is lower



ZE113

外置挂耳，易拆装  
External hanging ears, easy to disassemble and assemble

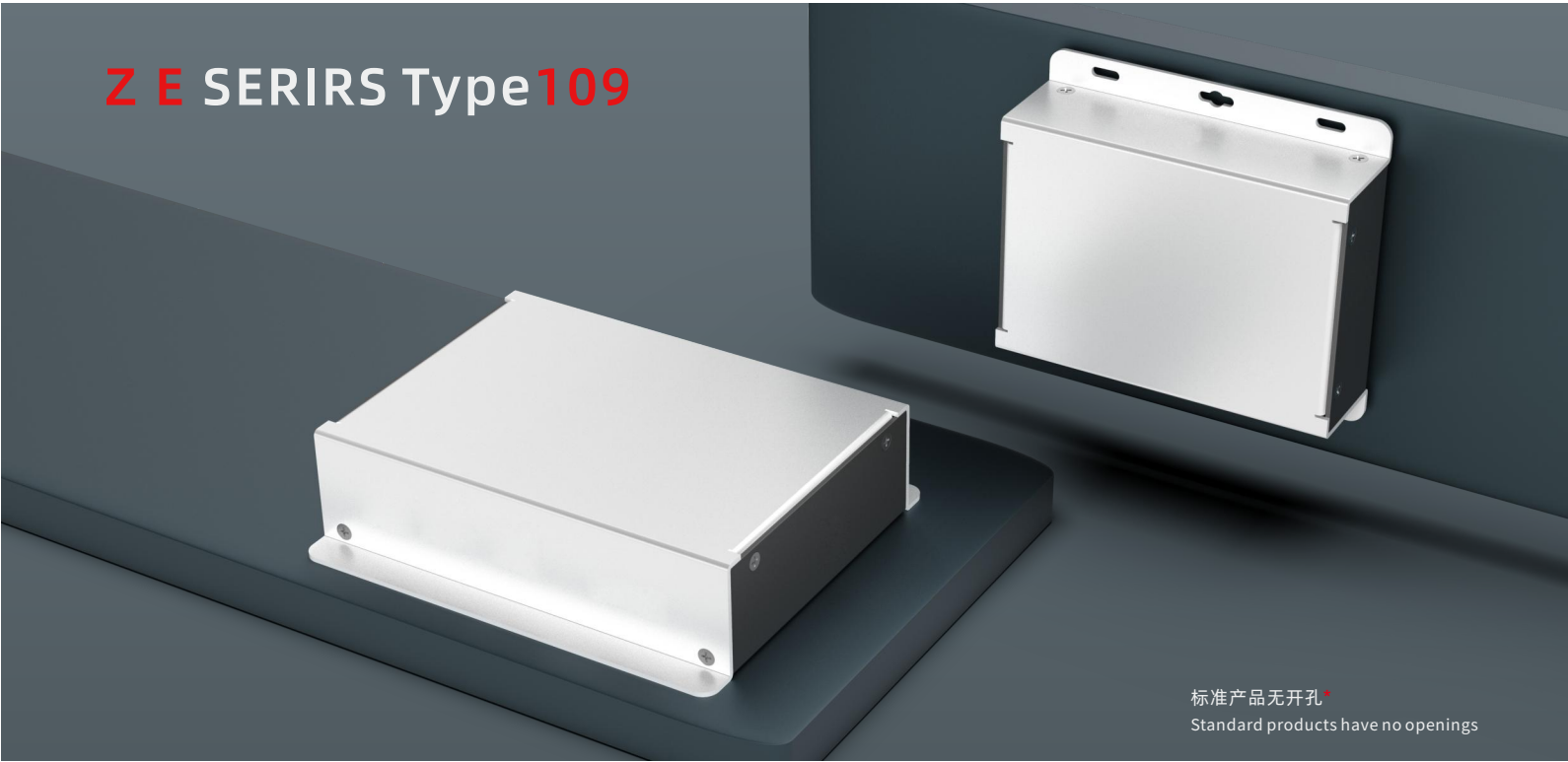


ZE114

定制开孔  
Custom cut-outs

可定制的选项：颜色、尺寸、款式（AorB）、表面处理方式、钣金厚度、图文印制、开孔  
Customizable options: color, size, style (AorB), finish, sheet metal thickness, Graphic printing, Cut-outs

定制选项 Customization options	款式 style	表面处理 Surface treatment	材质 Material	板厚 Thickness
配色/尺寸 Color/size	AorB	阳极氧化（铝）/粉末喷涂 Anodized(aluminum)or powder coated	5052-H32/SPCC	SPCC/1.2MM 5052-H32/1.5-2.5MM



设计说明  
Design Description

ZE109壳体适用于RTU，网关类设备，其拥有更自由的尺寸可定制性，壳体主要有上壳和下壳两部分，壳体表面采用阳极氧化，喷涂工艺，使得产品颜色更丰富，通过UV打印、激光雕刻等还可进行图案制作、LOGO刻印等。

ZE109 shell is suitable for RTU, gateway equipment, it has a more free size customizability, the shell mainly has two parts, the upper shell and the lower shell, the surface of the shell adopts anodizing, spraying process, so that the product color is richer, through UV printing, laser engraving, etc., it can also be used for pattern production, LOGO engraving, etc.

颜色及样例  
Colors and samples



青柠绿+皓雪白（喷涂）  
Lime Green + Snow White (Spraying)



珊瑚灰+皓雪白（喷涂）  
Coral gray + snow white (Spraying)

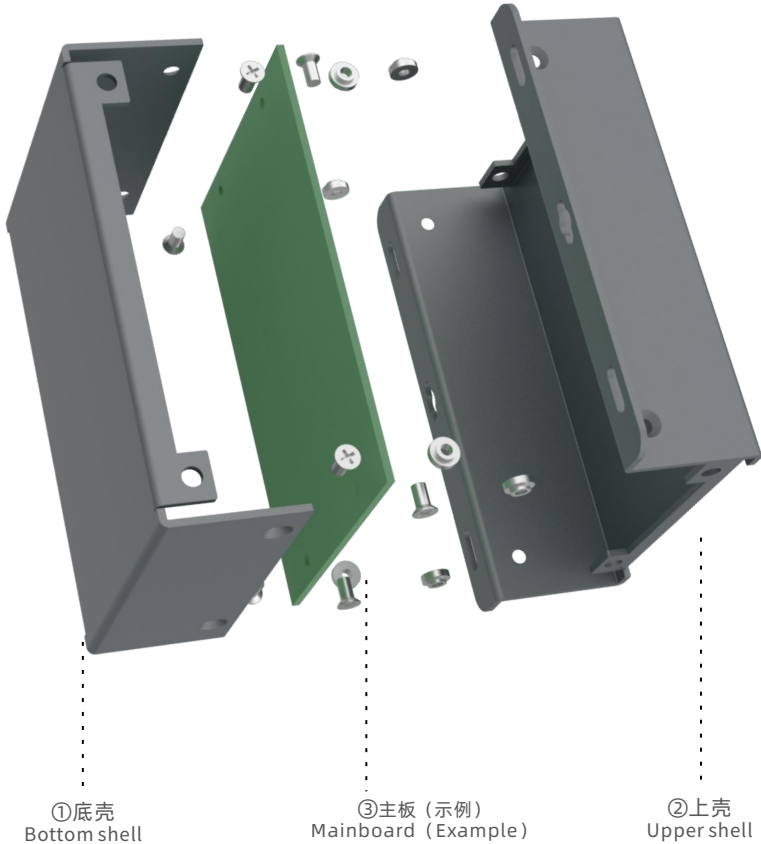


皓雪白+珊瑚灰（喷涂）  
Snow white+Coral gray (spraying)

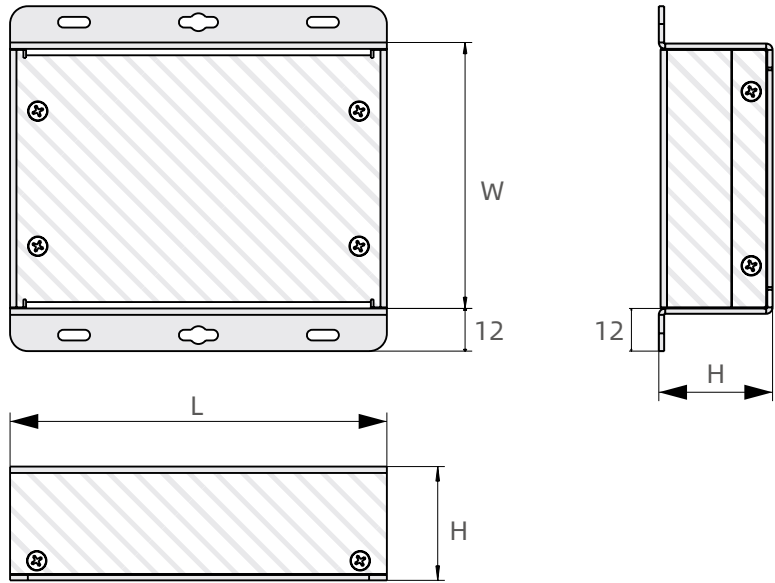


皓月银（金属拉丝）  
Haoyue Silver (Brushed metallic)

爆炸图  
Exploded view

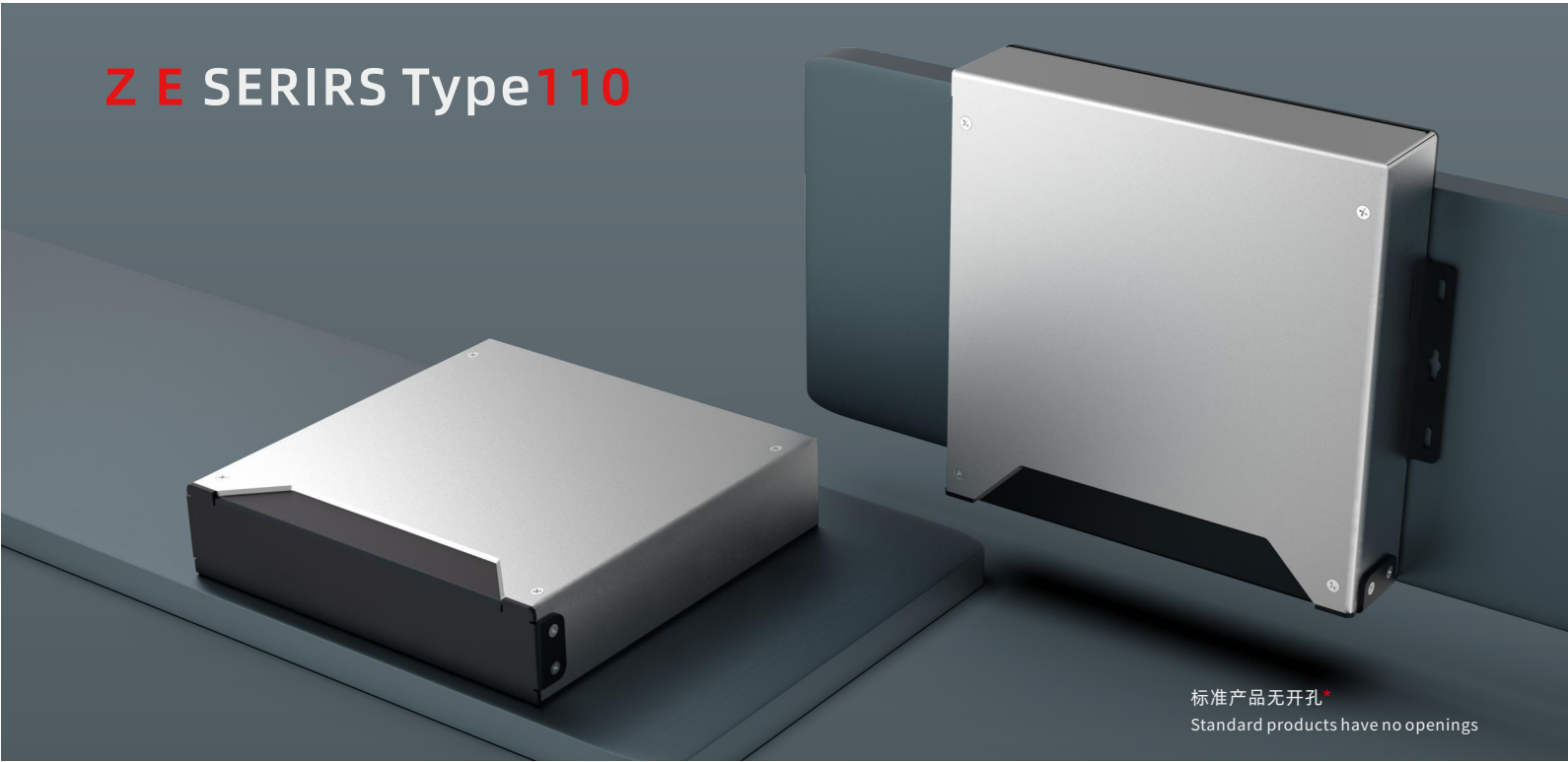


三视图  
Three views



型号 Model	外尺寸L*W*H Max.Outer size	内尺寸 Internal volume	表面处理 Surface treatment	材质 Material	板厚 Thickness
01	106X76X32	103X73X29	阳极氧化/粉末喷涂 Anodizing/powdercoating	SPCC/5052-H32	SPCC/1.2MM
02	138X98X36.5	135X95X36.5			5052-H32/1.5-2.5MM

产品尺寸仅供参考，详情登陆[www.yonggubox.com](http://www.yonggubox.com)  
The product dimensions are for reference only, please visit the [www.yonggubox.com](http://www.yonggubox.com) for details



设计说明  
Design Description

ZE110壳体适用于RTU，网关类设备，其拥有更自由的尺寸可定制性，壳体主要有上壳和下壳两部分，壳体表面采用阳极氧化，喷涂工艺，使得产品颜色更丰富，通过UV打印、激光雕刻等还可进行图案制作、LOGO刻印等。

ZE110 shell is suitable for RTU, gateway equipment, it has a more free size customizability, the shell mainly has two parts, the upper shell and the lower shell, the surface of the shell adopts anodizing, spraying process, so that the product color is richer, through UV printing, laser engraving, etc.

颜色及样例  
Colors and samples



珊瑚灰（喷涂）  
Coral gray (spraying)



深灰+皓雪白（喷涂）  
Dark Grey+Snow-white (spraying)

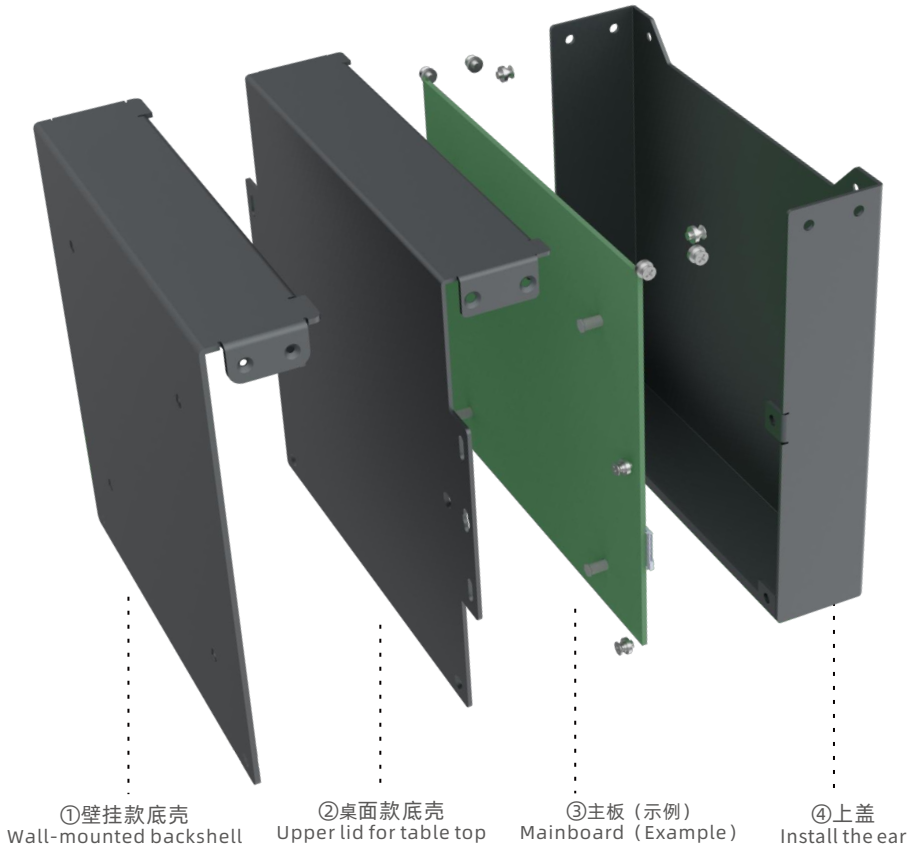


深灰（喷涂）  
Dark Grey (spraying)

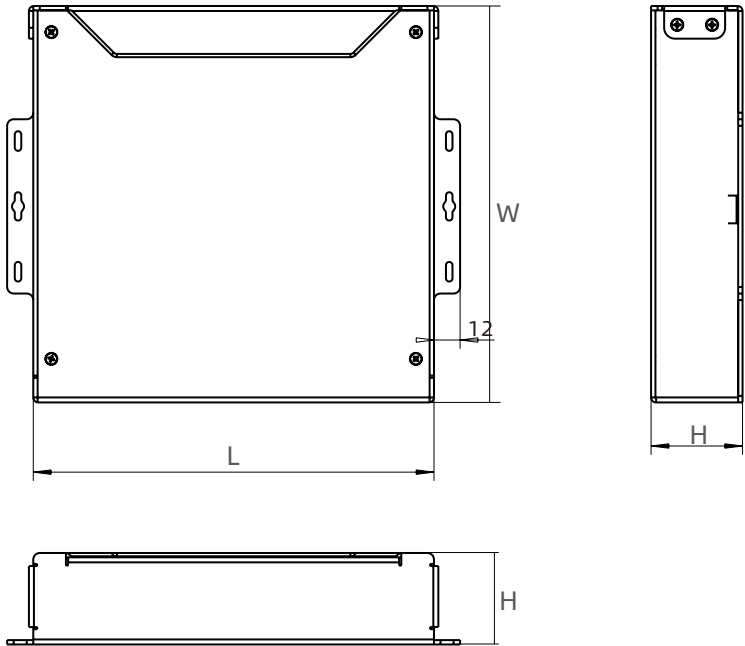


皓月银+墨玉黑（喷砂氧化）  
Haoyue Silver+Black (Sandblasting Oxidation)

爆炸图  
Exploded view



三视图  
Three views



型号 Model	外尺寸L*W*H Max.Outer size	内尺寸 Internal volume	表面处理 Surface treatment	材质 Material	板厚 Thickness
01	183.4X180X40	177X177X37	阳极氧化/粉末喷涂 Anodizing/powdercoating	SPCC/5052-H32	SPCC/1.2MM 5052-H32/1.5-2.5MM
02	183.4X180X50	177X177X47			

产品尺寸仅供参考，详情登陆[www.yonggubox.com](http://www.yonggubox.com)  
The product dimensions are for reference only, please visit the [www.yonggubox.com](http://www.yonggubox.com) for details





标准产品无开孔\*  
Standard products have no openings

ZE111shell is suitable for DTU, RTU, gateway equipment, it has a more free size customizability, the shell mainly has two parts, the upper shell and the lower shell, the surface of the shell adopts anodizing, spraying process, so that the color is richer, through UV printing, laser engraving, etc., it can also be used for pattern making, LOGO engraving, etc.

11 YONGU

This exploded view illustrates the 3U rackmount chassis assembly. The components shown include the top cover, the front panel, and the internal green PCB. The PCB is populated with a USB-to-serial converter module and a USB-A connector. The chassis is designed for 3U rackmounting, with mounting ears visible on the front panel. The exploded view shows the relative positions of the top cover, front panel, and internal components, highlighting the assembly structure.

..... ④主板 (示例)  
Mainboard (Example)

Technical drawing of the 1000 Series Single Door Cabinet showing three views: front, side, and top. The front view shows a rectangular cabinet with a handle on the left and a lock on the right. Dimensions are labeled: L (length), W (width), and 10.5 (height of the lock). The side view shows the cabinet's profile with a handle and a lock. The top view shows the cabinet's top with a handle and a lock. The drawing is labeled 1000 Series Single Door Cabinet.

型号 Model	外尺寸 L*W*H Max.Outer size	内尺寸 Internal volume	表面处理 Surface treatment	材质 Material	板厚 Thickness
01	163.7X103X42	160.7X100X39	阳极氧化/粉末喷涂 Anodizing/powdercoating	SPCC/5052-H32	SPCC/1.2MM 5052-H32/1.5-2.5MM
02	163.7X103X52	160.7X100X49			

The product dimensions are for reference only, please visit the [www.yonggubox.com](http://www.yonggubox.com) for details





设计说明  
Design Description

ZE113是针对树莓派等微型电脑控制器类的钣金壳体，其拥有更自由的尺寸可定制性，壳体主要有上壳和下壳两部分，壳体表面采用阳极氧化，喷涂工艺，颜色更丰富，通过UV打印、激光雕刻等还可进行图案制作、LOGO刻印等。

ZE113 is a sheet metal shell for Raspberry Pi and other microcomputer controllers, which has a more free size customizability, the shell mainly has two parts: the upper shell and the lower shell, the surface of the shell is anodized, spraying process, the color is richer, and the pattern can be made through UV printing, laser engraving, etc.

颜色及样例  
Colors and samples



翡翠绿（喷砂氧化）  
Emerald green (Sandblasting Oxidation)



珊瑚灰（喷涂）  
Coral grey (Sprayed)

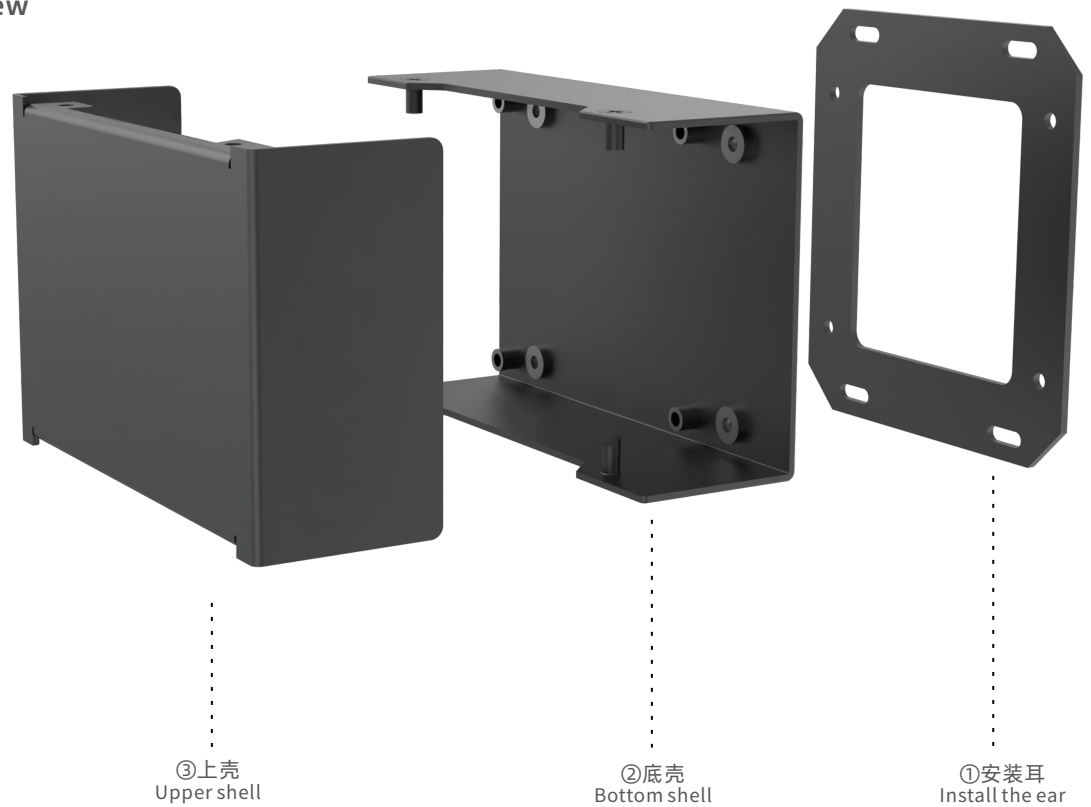


墨玉黑（喷砂氧化）  
Black (Sandblasting Oxidation)

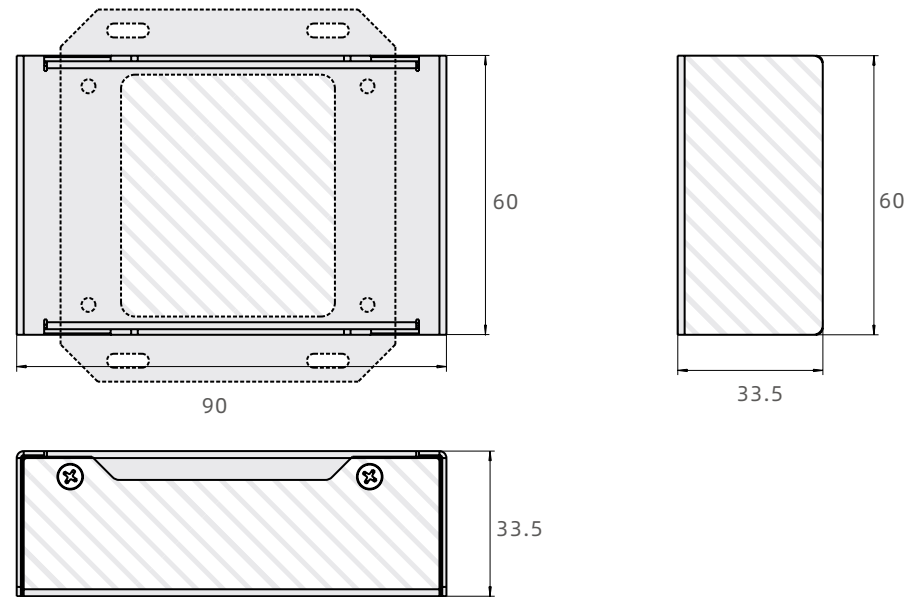


翡翠绿（金属拉丝）  
Emerald green (Brushed metallic)

爆炸图  
Exploded view



三视图  
Three views



型号 Model	外尺寸L*W*H Max.Outer size	内尺寸 Internal volume	表面处理 Surface treatment	材质 Material	板厚 Thickness
01	90X60X33.5	87X57X30.5	阳极氧化/粉末喷涂 Anodizing/powdercoating	SPCC/5052-H32	SPCC/1.2MM 5052-H32/1.5-2.5MM
02	90X60X53.5	87X57X50.5			

产品尺寸仅供参考，详情登陆[www.yonggubox.com](http://www.yonggubox.com)  
The product dimensions are for reference only, please visit the [www.yonggubox.com](http://www.yonggubox.com) for details



# ZE SERIRS Type 114AND115



标准产品无开孔  
Standard products have no openings

## 设计说明 Design Description

该款是针对树莓派等微型电脑的钣金壳体，其拥有更自由的尺寸可定制性，壳体主要有上壳和下壳两部分，壳体表面采用阳极氧化，喷涂工艺，颜色更丰富，通过UV打印、激光雕刻等还可进行图案制作、LOGO刻印等。ZE114可容纳单层主板，ZE115为拓展版本可容纳双层树莓派主板。

This is a sheet metal shell for microcomputers such as Raspberry Pi, which has a more free size customizability, the shell mainly has two parts: the upper shell and the lower shell, the surface of the shell is anodized, spraying process, richer colors, through UV printing, laser engraving, etc. The ZE114 can accommodate single-layer motherboards, and the ZE115 is an extended version that can accommodate double-layer Raspberry Pi motherboards.

## 颜色及样例 Colors and samples



青柠绿+深灰（喷涂）  
Lime Green + Dark Grey (Sprayed)



深灰+皓雪白（喷涂）  
Dark gray + snow white (Spraying)



墨玉黑（喷砂氧化）  
Black (Sandblasting Oxidation)

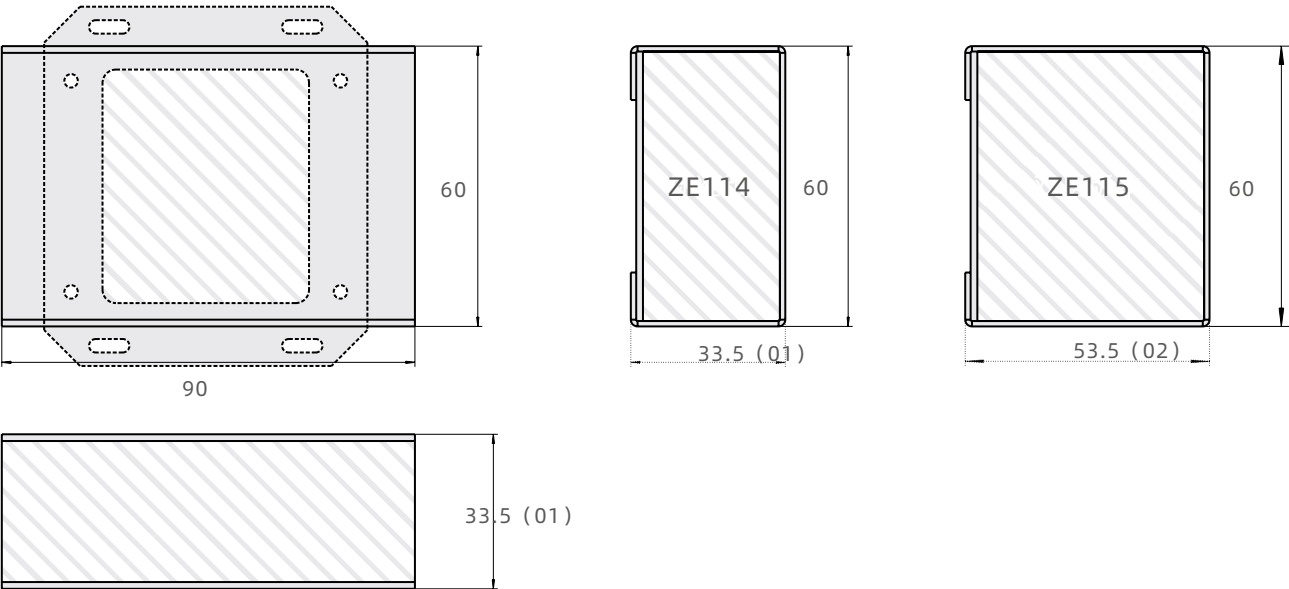


翡翠绿（金属拉丝）  
Emerald green (Brushed metallic)

## 爆炸图 Exploded view



## 三视图 Three views



型号 Model	外尺寸L*W*H Max.Outer size	内尺寸 Internal volume	表面处理 Surface treatment	材质 Material	板厚 Thickness
01	90X60X33.5	87X57X30.5	阳极氧化/粉末喷涂 Anodizing/powdercoating	SPCC/5052-H32	SPCC/1.2MM 5052-H32/1.5-2.5MM
02	90X60X53.5	87X57X50.5			

产品尺寸仅供参考，详情登陆[www.yonggubox.com](http://www.yonggubox.com)  
The product dimensions are for reference only, please visit the [www.yonggubox.com](http://www.yonggubox.com) for details

全系产品均对标L系列

# 散热齿系列钣金方案

降价不降质



•本系列产品介绍以ZS04为例。

## 总述 INTRO

本系列是散热齿钣金壳体，命名为ZS系列，全新的ZS系列是基于L系列产品而研发的钣金壳体解决方案——用钣金壳体代替原有的铝型材。ZS系列的产品具有价格低、尺寸灵活、交付周期短等优点。此外，该系列也支持各项定制服务，如尺寸、颜色、散热孔、面板、UV打印、激光打标等。

This series is a cooling tooth sheet metal shell, named ZS series, the new ZS series is based on L series products and developed sheet metal shell solutions - sheet metal shell instead of the original aluminum profile. The ZS series products have the advantages of low price, flexible size and short delivery cycle. In addition, the series also supports various customized services, such as size, color, heat dissipation hole, panel, UV printing, laser marking, etc.



•铝型材款



•钣金系列

60%

全系产品成本降低近60%  
更具性价比

4种

4种不同宽度的散热齿  
实现长度的完全定制

20%

设计周期节省近20%  
交付更迅速

1件

全系一件起订  
量小也行

## 产品效果 RENDERINGS



## 爆炸图 EXPLOSIVE VIEW

### 1.散热齿

材质：5052-H32  
组成用量：1PCS

### 2.下壳

材质：5052-H32  
组成用量：1PCS

### 3.M3×8内六角杯头螺丝

材质：碳钢  
组成用量：4PCS

## 物料表 MATERIALS

序号(S/N)	名称(Part Name)	表面处理(Finish)	材料(Material)	数量(QTY)
1	散热齿/Cooling Tooth	阳极氧化/Anodizing	5052-H32/SPCC	1
2	下壳/Bottom Shell	阳极氧化/Anodizing	5052-H32/SPCC	1
3	M3×8内六角杯头螺丝/GB-T-70.1-2000-C-BE-M3X8	镀白镍/White、发黑/Black	碳钢/Carbon Stell	4

拓展方案

OTHERS

壁挂方案

WALL HANGING

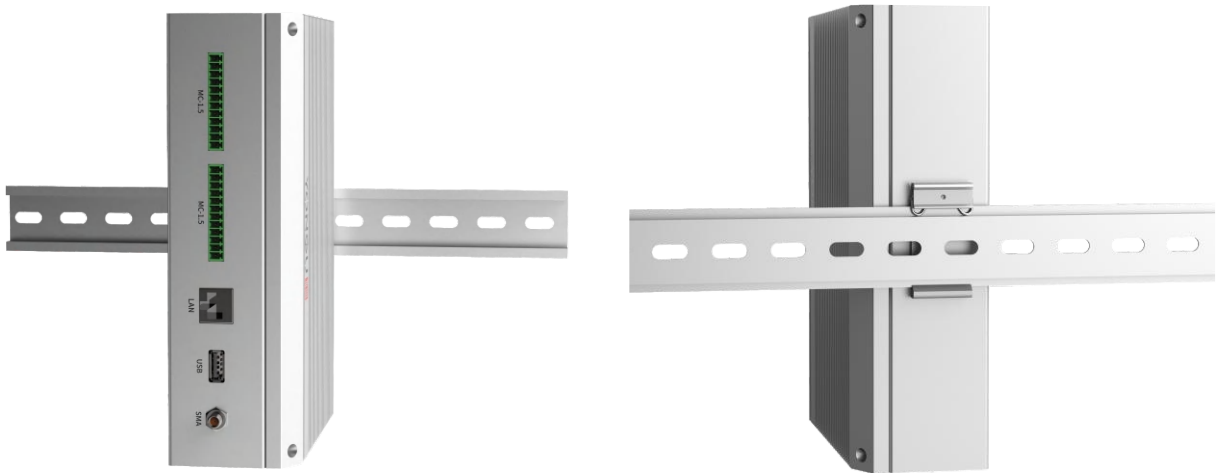


壁挂方案。产品可选装壁挂方案，将壳体加工成与生产环境适配的产品，使产品的安装不受限制。

Wall hanging scheme. The product can be optional wall hanging scheme, and the shell is processed into a product suitable for the production environment, so that the installation of the product is not restricted.

DIN 35导轨方案

DIN 35 RAIL

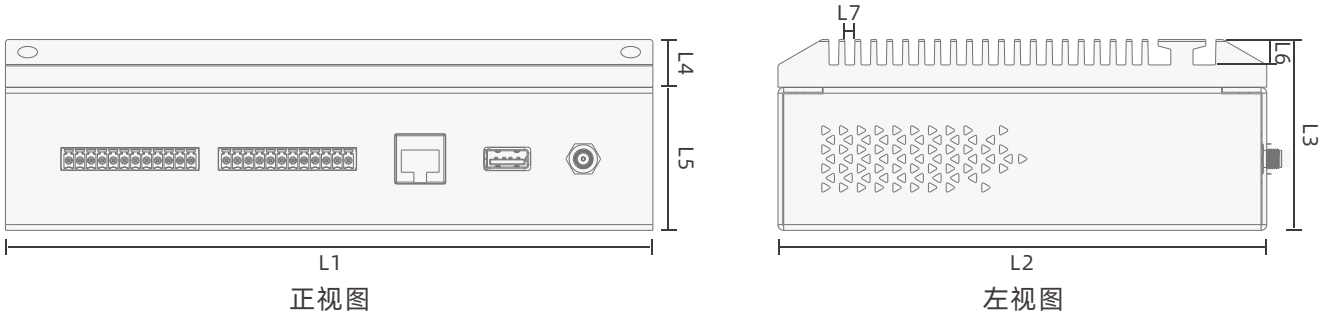


DIN 35导轨方案。产品可选装DIN 35导轨方案，将壳体加工成与生产环境适配的产品，使产品的安装不受限制。

DIN 35 rail solution. The product can be equipped with an optional DIN 35 rail solution, and the housing is machined into a product suitable for the production environment, so that the installation of the product is unlimited.





产品尺寸

SIZES



产品参数

PARAMATER

				
型号	ZS01	ZS02	ZS03	ZS04
散热齿宽度(L1) Section Width(L1)	79	119	129	154
散热齿高度(L4) Section Height(L4)	13	15	15	15
面板尺寸 (L1:L5) Panel Size(L1:L5)	79:30	119:35	129:40	154:45
是否支持拓展方案 Expansion Scheme	√	√	√	√
是否支持长度定制 Length Customization	√	√	√	√
壳体容量尺寸 Shell Capacity	101:76:27	151:116:32	171:126:37	201:151:42
常备长度尺寸 (L1:L2:L3) Section Width(L1:L2:L3)	104:79:43	154:119:50	174:129:55	204:154:60

散热齿参数

COOLING TOOTH

型号	材料	表面积/MM <sup>2</sup>	齿高 (L6)	齿间距 (L7)
ZS01	铝/Aluminum	35439	6	2. 56
ZS02	铝/Aluminum	82191	8	3. 23
ZS03	铝/Aluminum	101389	8	3. 23
ZS04	铝/Aluminum	139336	8	3. 23

- 散热能力与散热齿表面积呈正相关。

产品定制

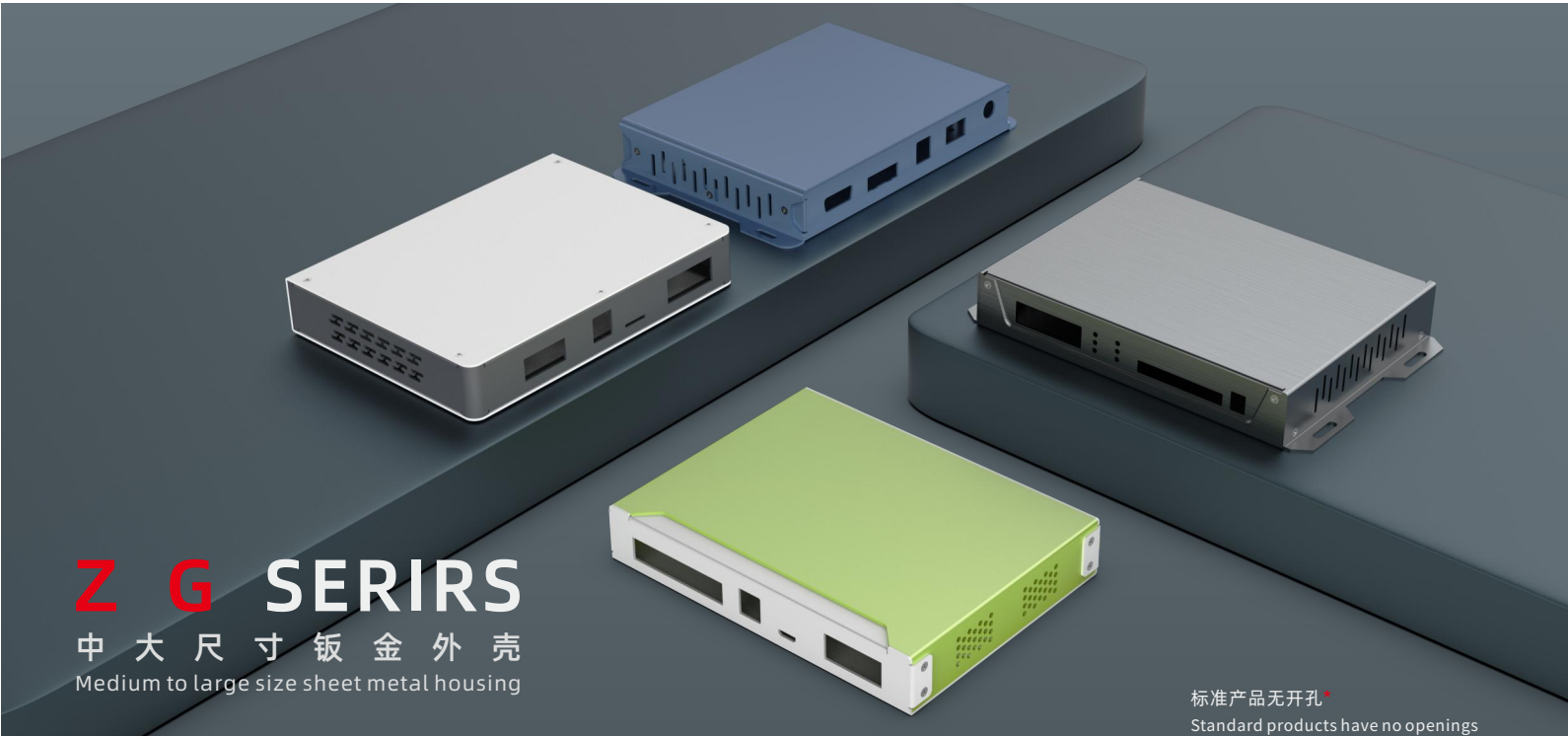
CUSTOMIZATION



全系产品已实现完全定制。在产品规格、颜色、散热孔、面板、UV打印等方面已实现客制化定制服务。（定制详情和技术规范可参考附页）

All products have been fully customized. In terms of product specifications, colors, heat dissipation holes, panels, UV printing, we have achieved complete customization services. (Customization details and technical specifications can be referred to the attached page)





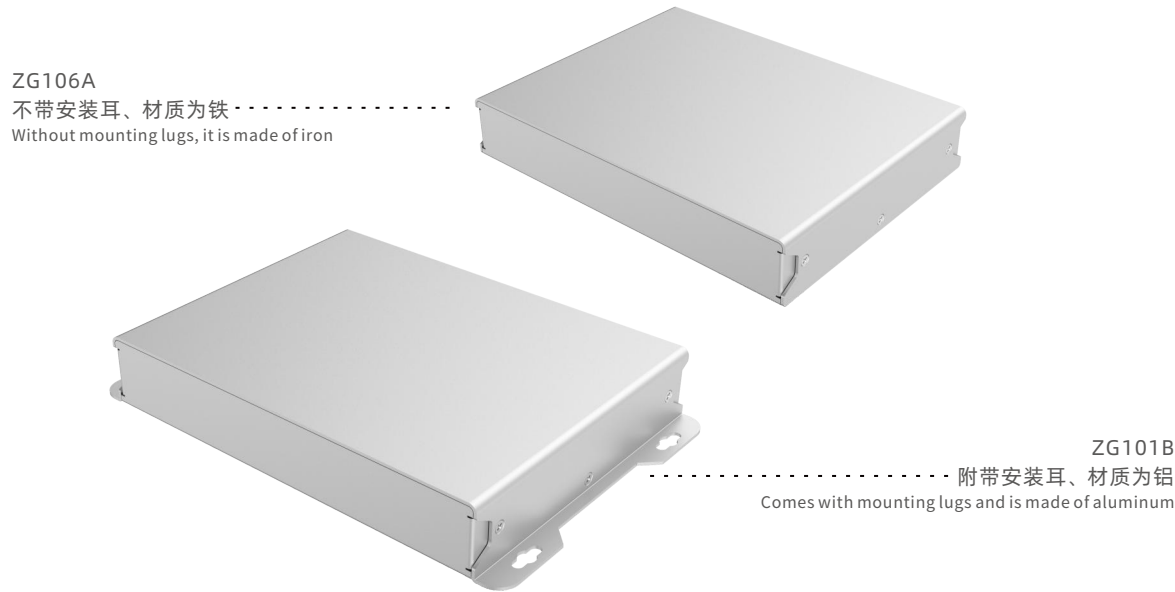
设计说明  
Design Description

ZG系列是对标永锢G系列开发的钣金壳体，其壳体部件少，可定制更多尺寸，表面采用阳极氧化，喷涂工艺，使得产品颜色更丰富，通过UV打印、激光雕刻等还可进行图案制作、LOGO刻印等。

产品区分：ZG为系列名称，第一个数字代表第N款造型，101-105材质为铝板，106-110为铁板，AorB代表无或有安装耳（例如ZG106A无安装耳，ZG101B有安装耳），铁板厚度为（1.2MM），铝板厚度（1.5-2.5MM），铁板只做粉末喷涂，铝板既可阳极氧化也粉末喷涂。

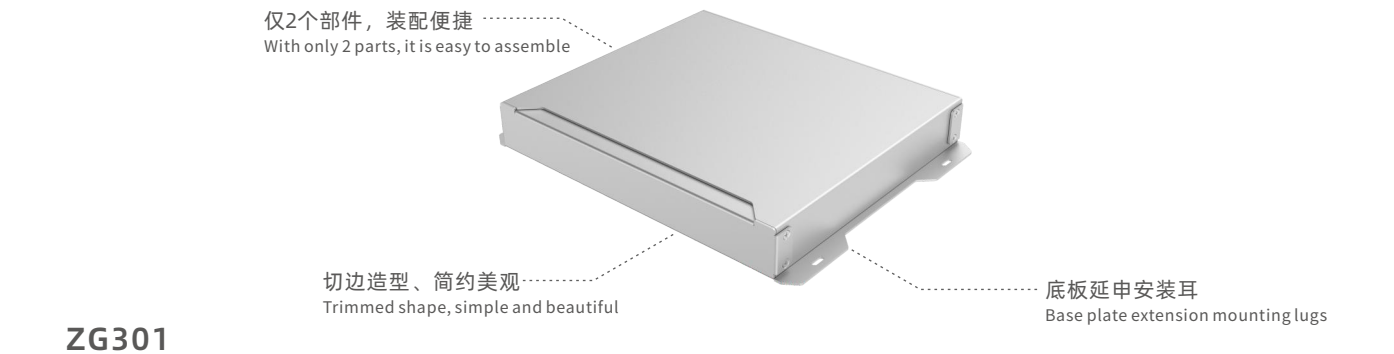
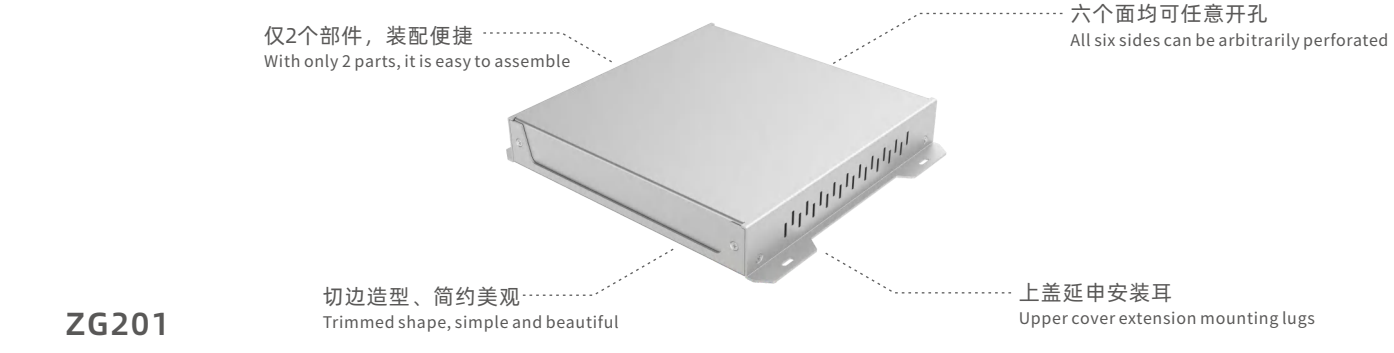
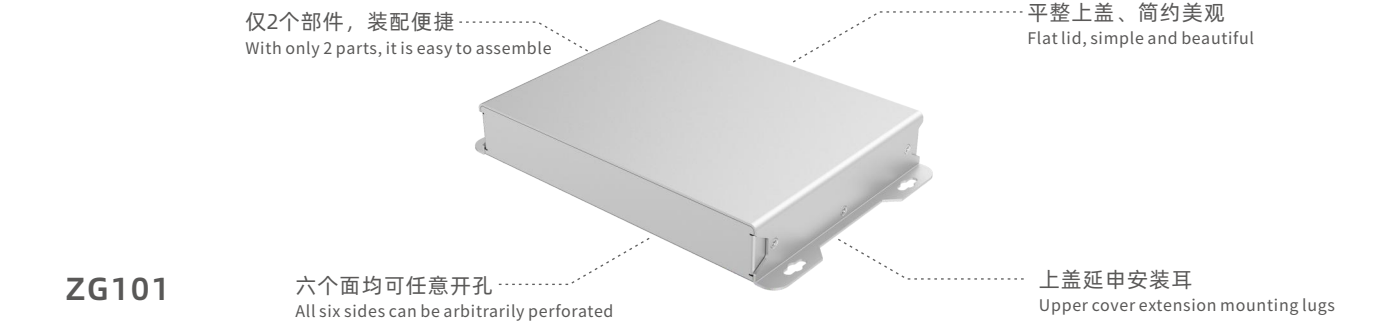
ZG series is a sheet metal shell developed against Yong Gong G series, its shell parts are few, more sizes can be customized, the surface adopts anodizing, spraying process, so that the product color is richer, through UV printing, laser engraving, etc., it can also be used for pattern making, LOGO engraving, etc.

Product distinction: ZG is the name of the series, the first number represents the Nth modeling, 101-105 is made of aluminum plate, 106-110 is iron plate, AorB stands for no or installed ears (for example, ZG106A has no mounting ears, ZG101B has mounting ears), the thickness of the iron plate is (1.2MM), the thickness of the aluminum plate (1.5-2.5MM), the iron plate is only powder coated, and the aluminum plate can be anodized and powder coated.



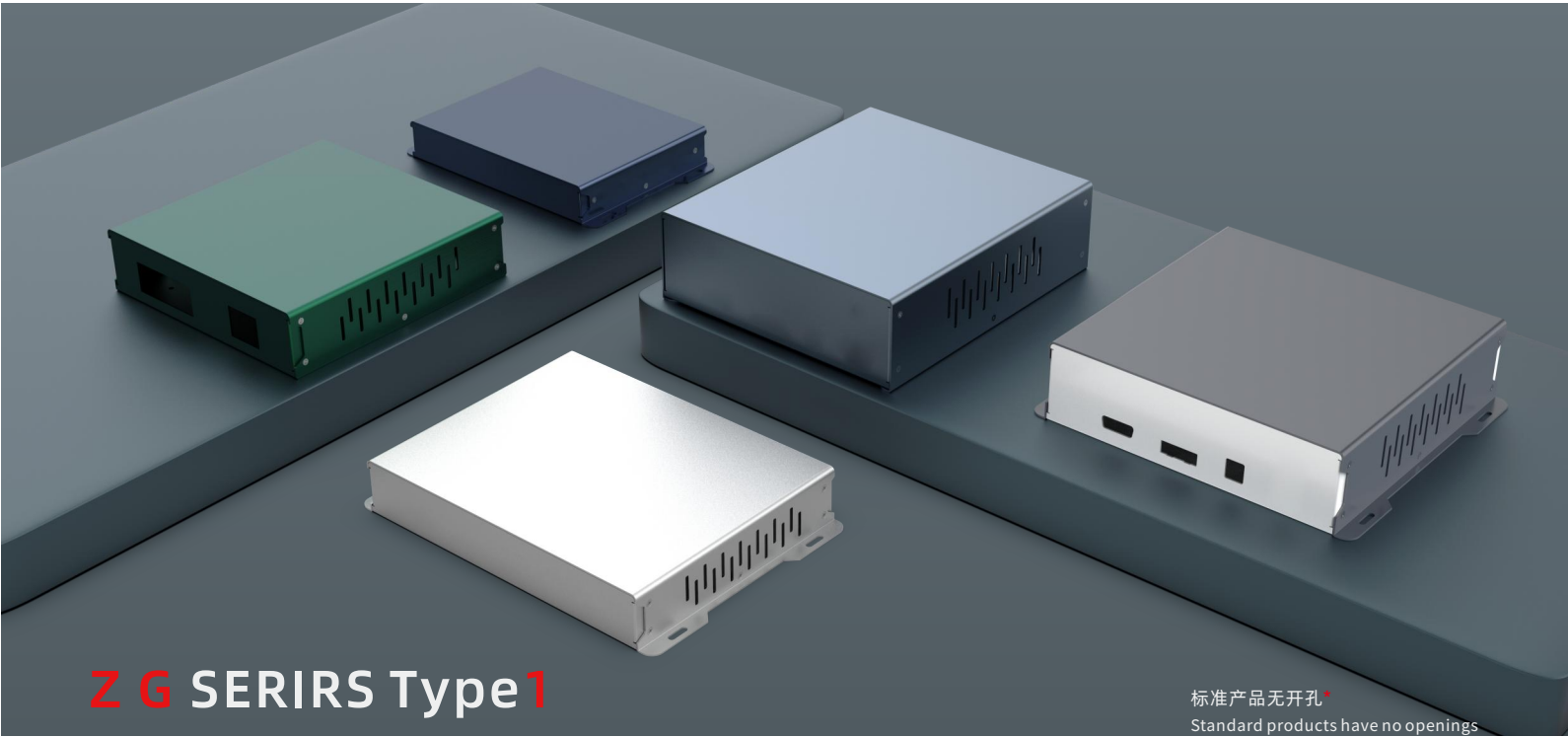
同型号AB款用于区别有无安装耳，X01-X05为铝板，X06-x10为铁板  
The same model AB is used to distinguish whether there are mounting ears, X01-X05 is an aluminum plate, X06-x10 is an iron plate.

ZG系列提供4个造型样式，每个造型都可自定义尺寸  
The ZG series offers 4 styling styles, each with customizable dimensions



可定制的选项：颜色、尺寸、款式（AorB）、表面处理方式、钣金厚度、开孔  
Customizable options: color, size, style (AorB), finish, sheet metal thickness, Cut-outs

定制选项 Customization options	款式 style	表面处理 Surfacetreatment	材质 Material	板厚 Thickness
配色/尺寸 Color/size	AorB	阳极氧化（铝）/粉末喷涂 Anodized(aluminum)or powder coated	5052-H32/SPCC	SPCC/1.2MM 5052-H32/1.5-2.5MM



设计说明  
Design Description

ZG1作为钣金壳体，秉承着美观、易用易安装的设计理念，上盖融合了安装耳，并且做了一点圆角过渡，侧面的梯形缺口让产品不显得太单调，壳包底的结构使得在表面处理上也可做一些的搭配。

As a sheet metal shell, ZG1 adheres to the design concept of beautiful, easy to use and easy to install, the upper cover is integrated with the mounting ears, and a little rounded corner transition is made, the trapezoidal notch on the side makes the product not too monotonous, and the structure of the shell bottom makes it possible to do some matching in the surface treatment.

颜色及样例  
Colors and samples



枫叶橙+珊瑚灰（喷涂）  
Maple Orange + Coral Grey (Sprayed)



皓月银（喷砂氧化）  
Haoyue Silver (Sandblasting Oxidation)

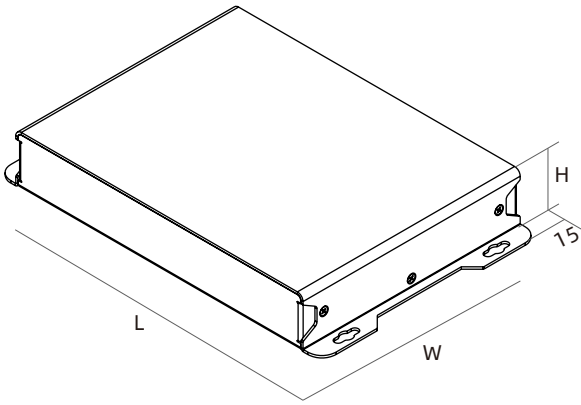
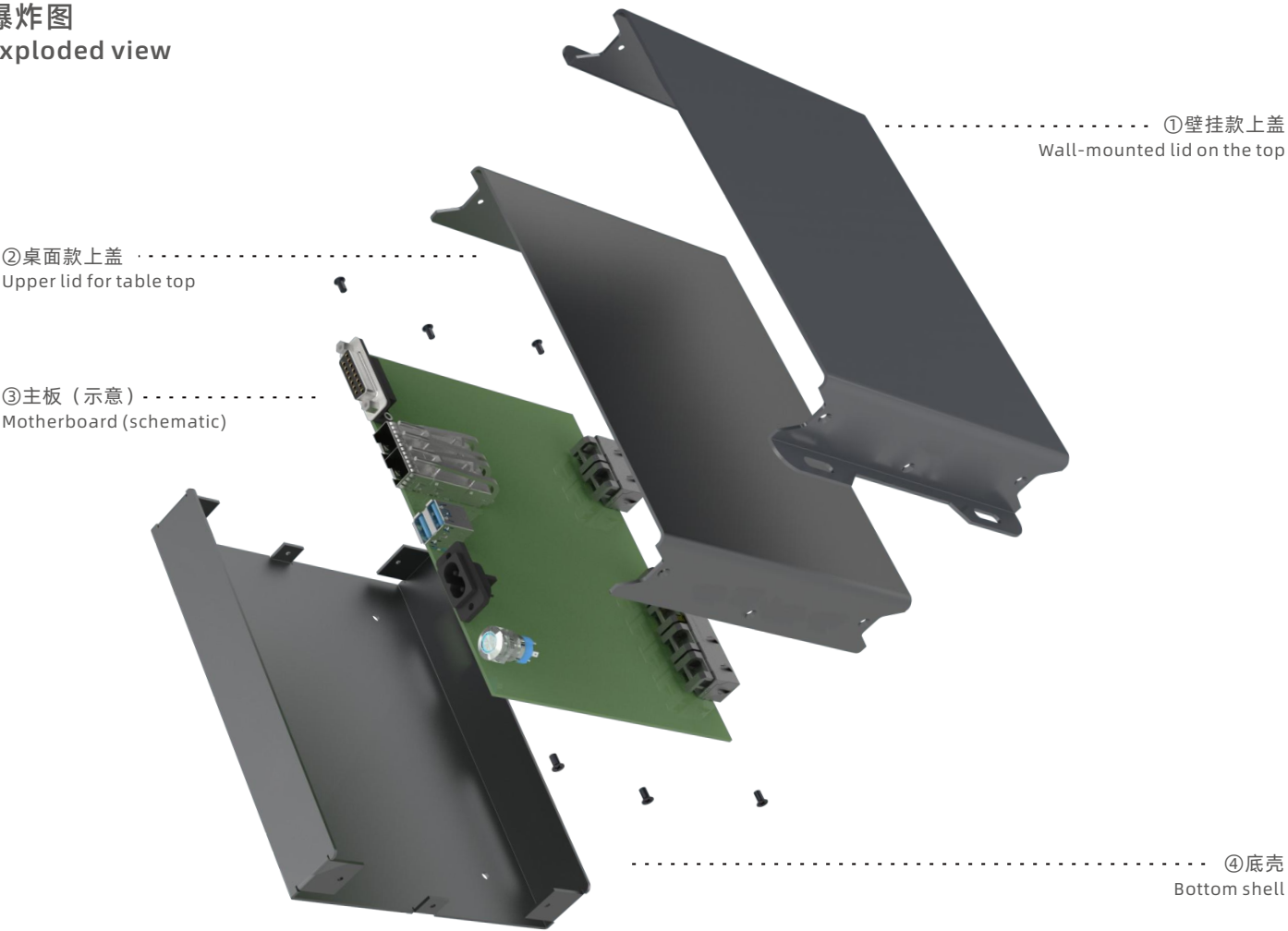


青柠绿+皓雪白（喷涂）  
Lime Green + Snow White (Spraying)



珊瑚灰+皓雪白（喷涂）  
Coral gray + Snow white (Spraying)

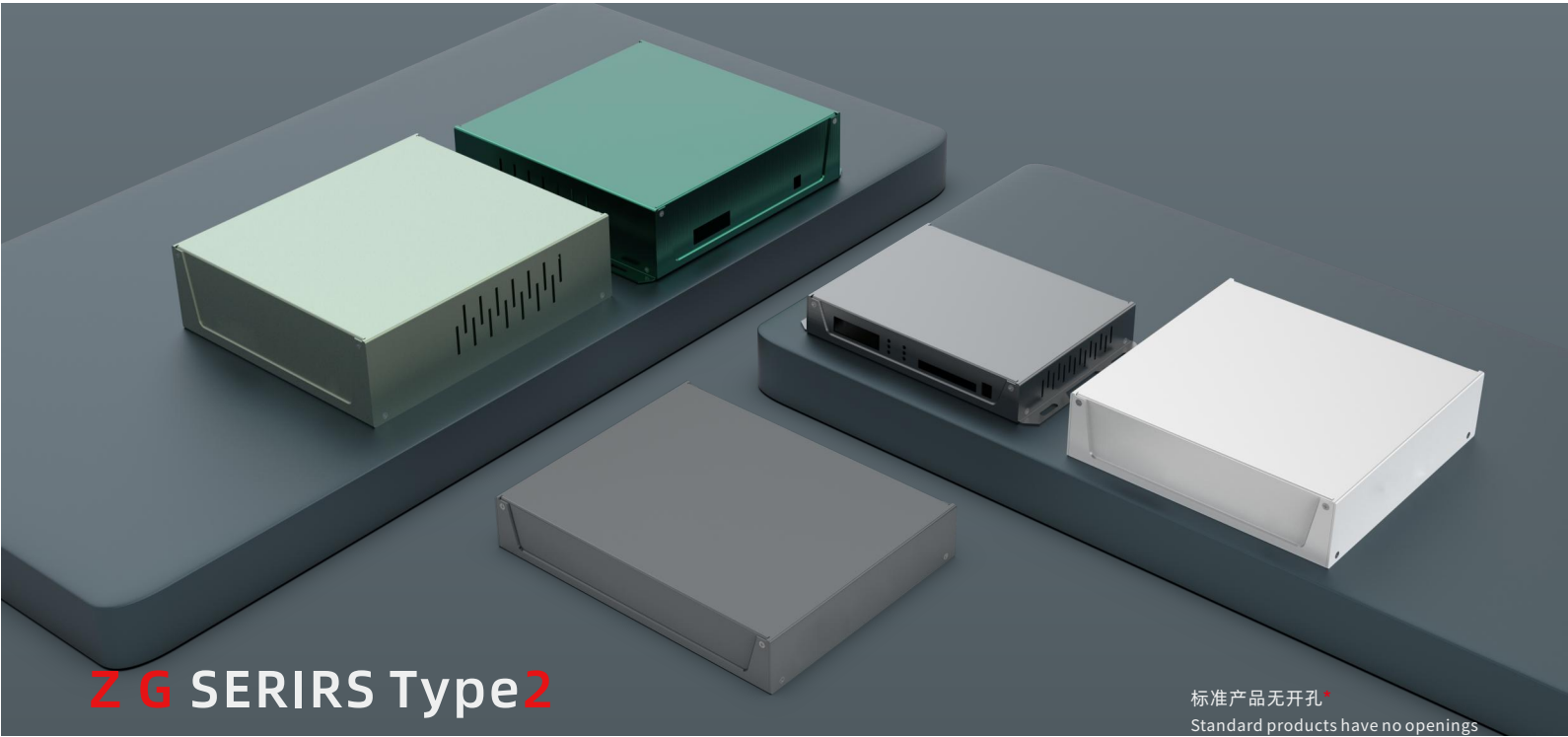
爆炸图  
Exploded view



101-105为铝板，106-110为铁板，您可以根据需要定制尺寸。  
101-105 is aluminum plate, 106-110 is iron plate, you can customize the size according to your needs

型号 Model	尺寸L*W*H Size	表面处理 Surface treatment	材质 Material	板厚 Thickness
ZG101/ZG106	205X155X35	阳极氧化（铝）/粉末喷涂 Anodized(aluminum)or powdercoated	5052-H32/SPCC	SPCC/1.2MM 5052-H32/1.5-2.5MM
ZG102/ZG107	262X205X45			
ZG103/ZG108	216X216X55			
ZG104/ZG109	236X236X65			
ZG105/ZG110	255X226X75			

产品尺寸仅供参考，详情登陆www.yonggubox.com  
The product dimensions are for reference only, please visit the www.yonggubox.com for details



设计说明  
Design Description

ZG2的前后挡板做了梯形的造型，梯形切角的安装耳和上盖融为一体，结构上采用了底包壳的设计，元器件可以更集中安装于底板，装配上更简单。  
The front and rear baffles of ZG2 are trapezoidal, the trapezoidal chamfered mounting ears and the upper cover are integrated, and the design of the bottom cladding is adopted in the structure, so that the components can be more concentrated on the bottom plate and the assembly is simpler.

颜色及样例  
Colors and samples



皓雪白+珊瑚灰（喷涂）  
snow white + Coral Grey (Sprayed)



皓月银（金属拉丝）  
Haoyue Silver (Brushed metal)

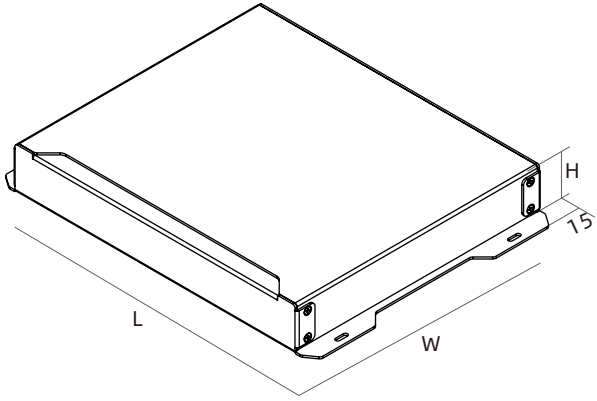
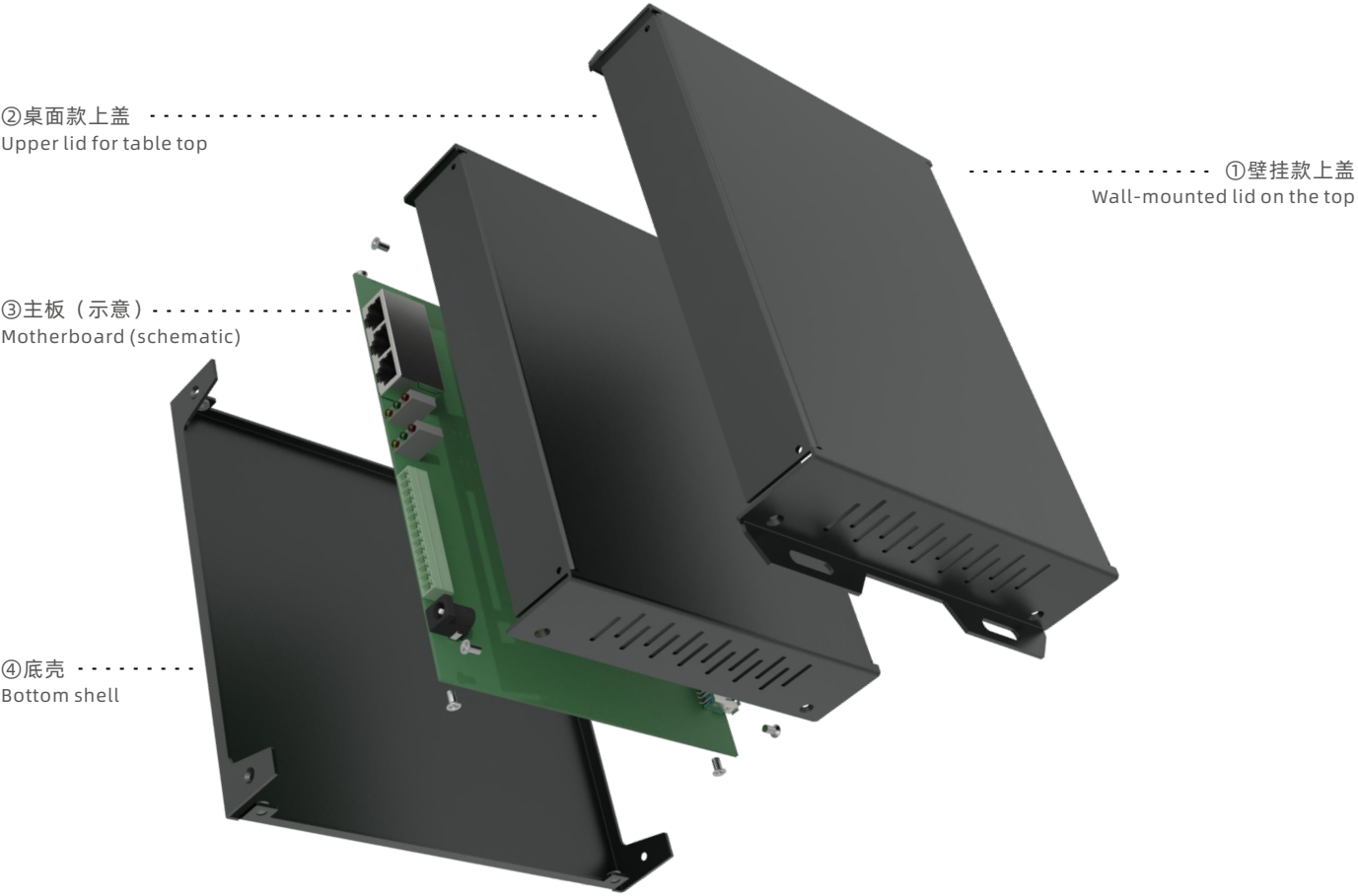


青柠绿（喷涂）  
Lime Green (Spraying)



墨玉黑（喷砂氧化）  
Black (Sandblasted oxidation)

爆炸图  
Exploded view

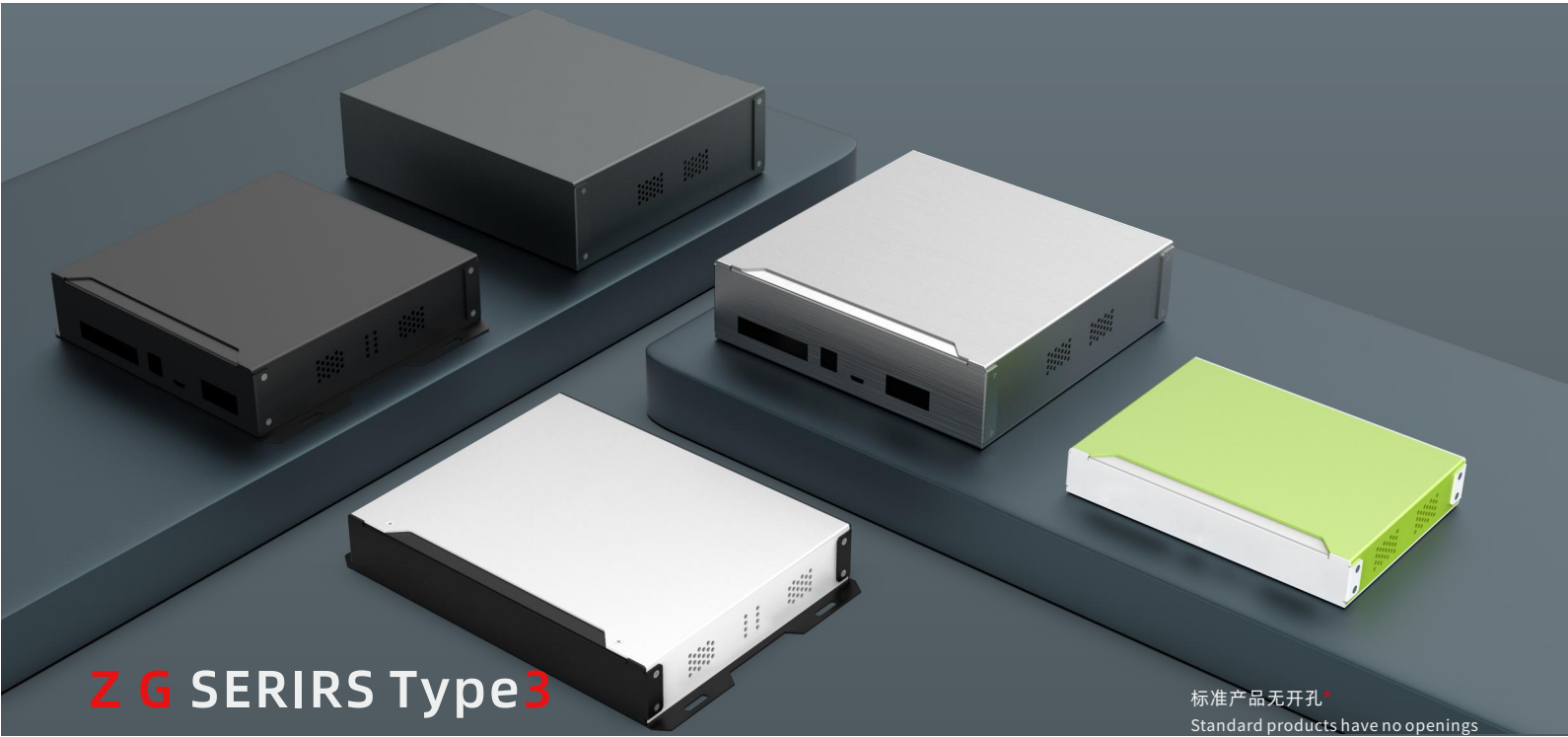


201-205为铝板，206-210为铁板，您可以根据需要定制尺寸。  
201-205 is aluminum plate, 206-210 is iron plate, you can customize the size according to your needs

型号 Model	尺寸L*W*H Size	表面处理 Surface treatment	材质 Material	板厚 Thickness
ZG201/ZG206	205X155X35	阳极氧化（铝）/粉末喷涂 Anodized(aluminum)or powdercoated	5052-H32/SPCC	SPCC/1.2MM 5052-H32/1.5-2.5MM
ZG202/ZG207	262X205X45			
ZG203/ZG208	216X216X55			
ZG204/ZG209	236X236X65			
ZG205/ZG210	255X226X75			

产品尺寸仅供参考，详情登陆www.yonggubox.com  
The product dimensions are for reference only, please visit the www.yonggubox.com for details





设计说明  
Design Description

ZG3的前后挡板做了梯形的造型，梯形切角的安装耳和上盖融为一体，结构上采用了底壳和上盖穿插设计，元器件可以更集中安装于底板，装配上更简单。

The front and rear baffles of ZG3 have been trapezoidal, and the trapezoidal chamfered mounting ears and upper cover are integrated, and the structure adopts the interspersed design of the bottom shell and the upper cover, so that the components can be more concentrated on the bottom plate and the assembly is simpler.

颜色及样例  
Colors and samples



皓月银（金属拉丝）  
Haoyue Silver (Brushed metal)



珊瑚灰+皓雪白（喷涂）  
Coral gray + Snow white (Spraying)

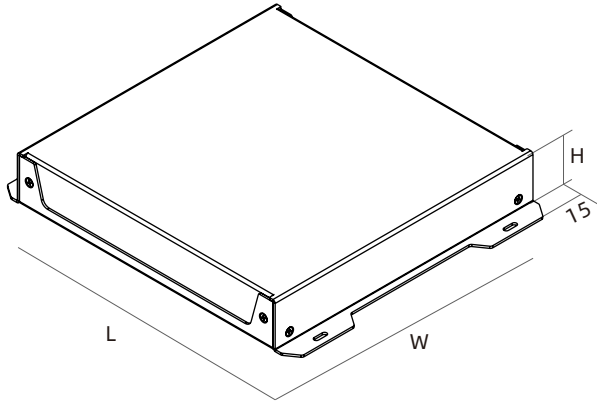
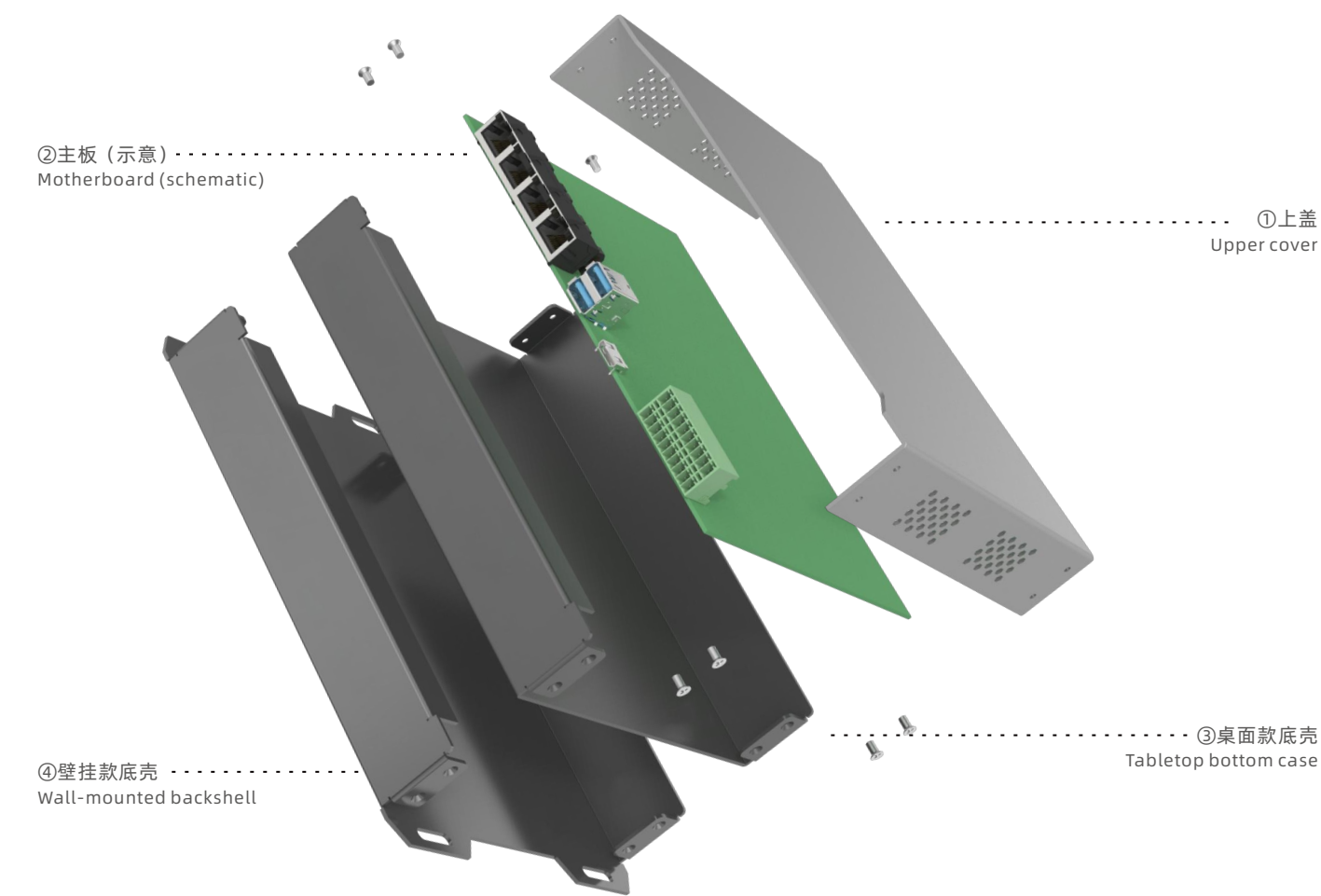


军绿色（喷涂）  
Army green (Spraying)



枫叶橙+皓雪白（喷涂）  
Coral gray + Snow white (Spraying)

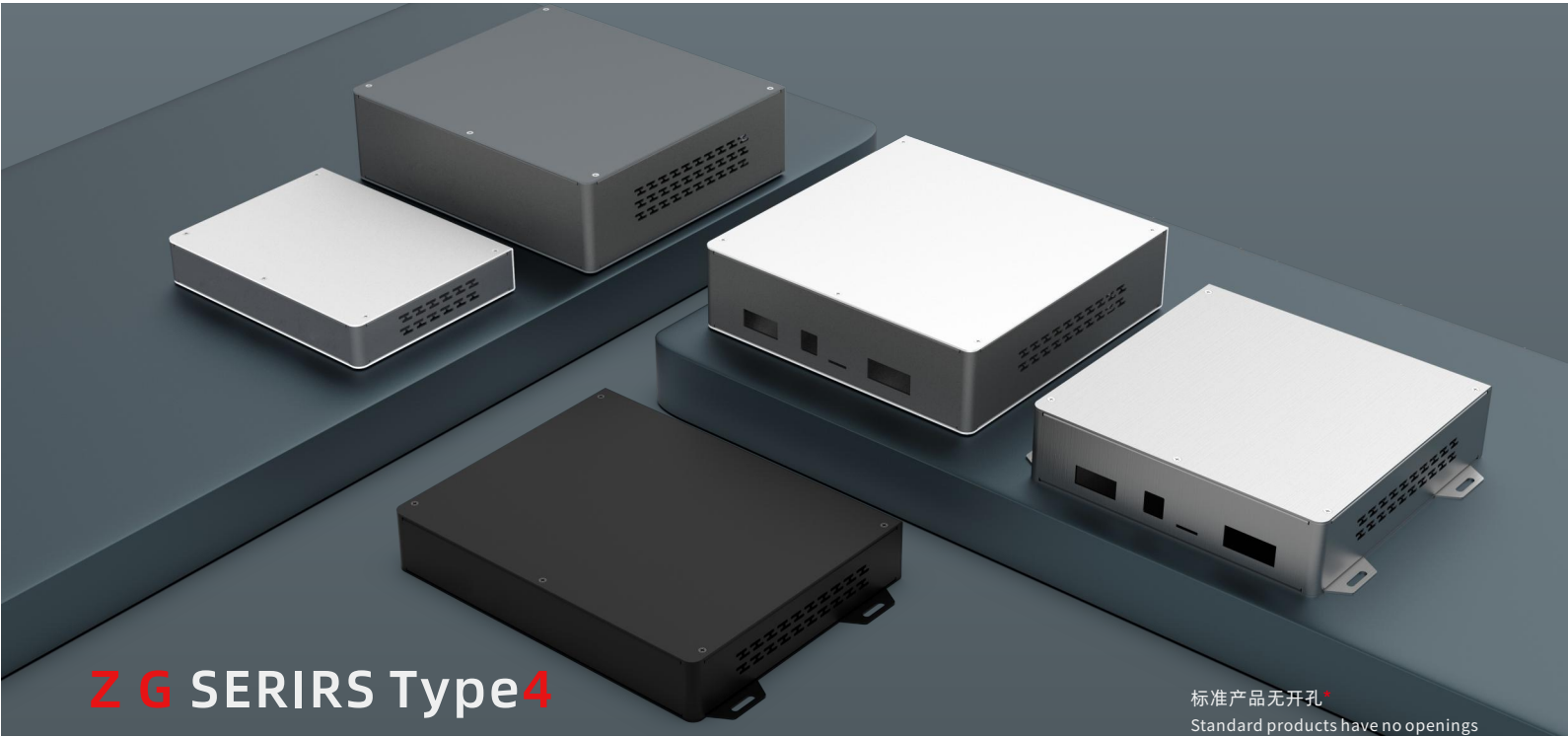
爆炸图  
Exploded view



301-305为铝板，306-310为铁板，您可以根据需要定制尺寸。  
301-305 is aluminum plate, 306-310 is iron plate, you can customize the size according to your needs

型号 Model	尺寸L*W*H Size	表面处理 Surface treatment	材质 Material	板厚 Thickness
ZG301/ZG306	205X155X35	阳极氧化（铝）/粉末喷涂 Anodized(aluminum)or powdercoated	5052-H32/SPCC	SPCC/1.2MM 5052-H32/1.5-2.5MM
ZG302/ZG307	262X205X45			
ZG303/ZG308	216X216X55			
ZG304/ZG309	236X236X65			
ZG305/ZG310	255X226X75			

产品尺寸仅供参考，详情登陆www.yonggubox.com  
The product dimensions are for reference only, please visit the www.yonggubox.com for details



## ZG SERIRS Type4

标准产品无开孔  
Standard products have no openings

### 设计说明 Design Description

ZG4采用了两个U型互相嵌合的结构，侧边框折弯处采用了更大的弧度，整体更时尚，采用了三个部件，安装耳位于底板，元器件可以更集中安装于底板，装配上更简单。

ZG4 adopts two U-shaped mating structures, the side frame bends with a larger arc, the overall is more fashionable, the use of three parts, the mounting ears are located in the bottom plate, the components can be more concentrated in the base plate, the assembly is simpler.

### 颜色及样例 Colors and samples



夜阑灰（喷砂氧化）  
Nightshade ash (Sandblasting oxidation)



珊瑚灰+皓雪白（喷涂）  
Coral gray + Snow white (Spraying)

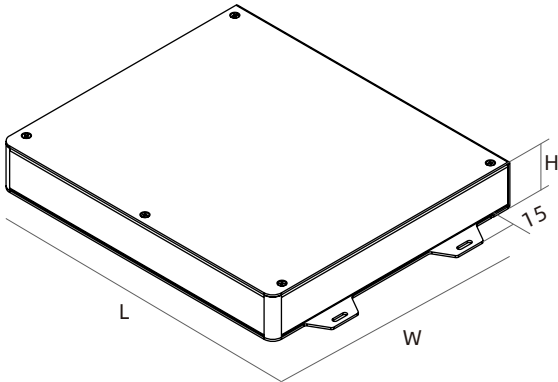
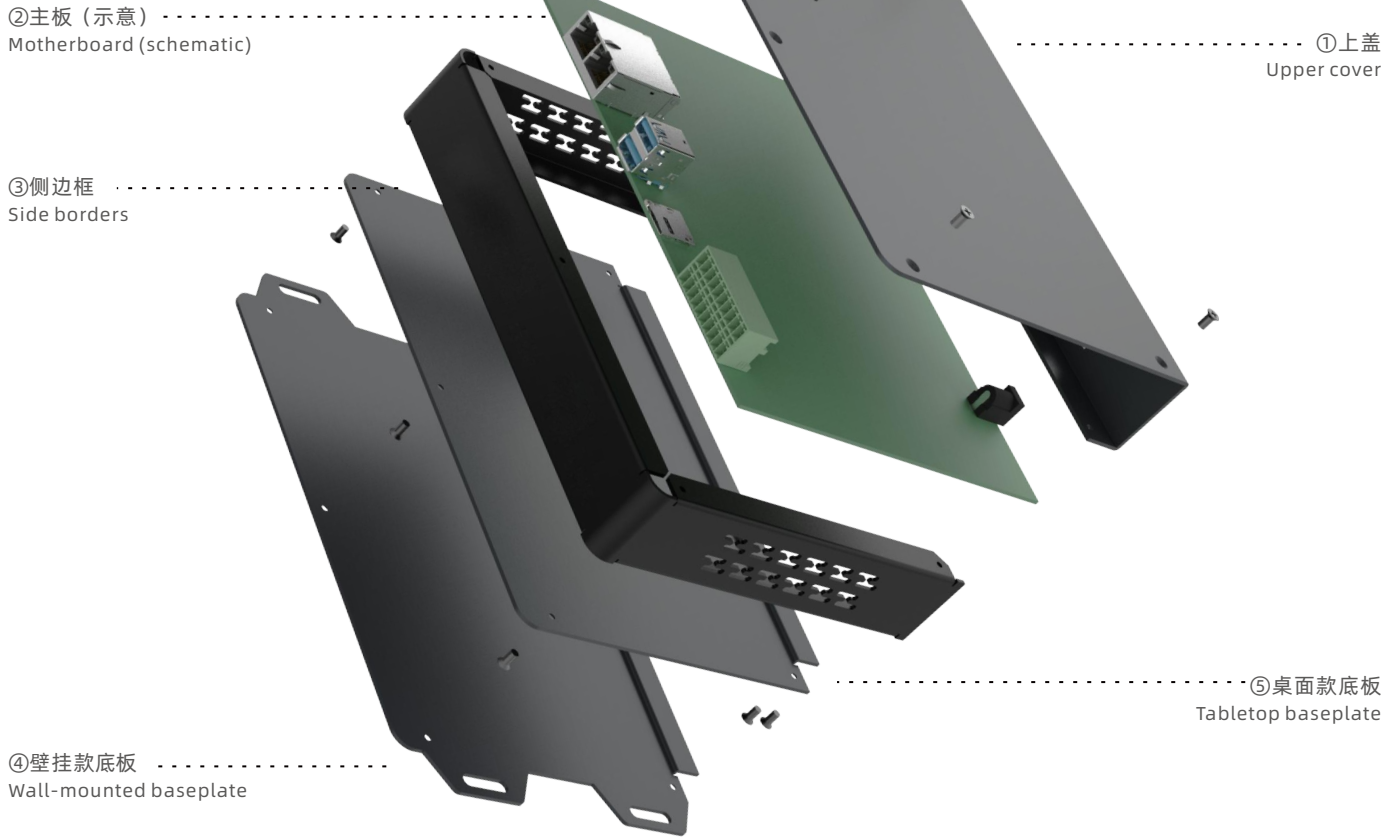


枫叶橙+皓雪白（喷涂）  
Maple Orange + Snow White (Spraying)



皓雪白+墨玉黑（喷涂）  
Snow white+Black (Spraying)

### 爆炸图 Exploded view



401-405为铝板，406-410为铁板，您可以根据需要定制尺寸。  
401-405 is aluminum plate, 406-410 is iron plate, you can customize the size according to your needs

型号 Model	尺寸L*W*H Size	表面处理 Surface treatment	材质 Material	板厚 Thickness
ZG401/ZG406	205X155X35	阳极氧化（铝）/粉末喷涂 Anodized(aluminum)or powdercoated	5052-H32/SPCC	SPCC/1.2MM 5052-H32/1.5-2.5MM
ZG402/ZG407	262X205X45			
ZG403/ZG408	216X216X55			
ZG404/ZG409	236X236X65			
ZG405/ZG410	255X226X75			

产品尺寸仅供参考，详情登陆[www.yonggubox.com](http://www.yonggubox.com)  
The product dimensions are for reference only, please visit the [www.yonggubox.com](http://www.yonggubox.com) for details

全系产品均对标C系列

# 19寸机箱系列钣金方案

降价不降质



•本系列产品介绍以1U机箱为例。

## 总述 INTRO

本系列是19寸机箱钣金壳体，命名为ZC系列，全新的ZC系列是基于19寸机箱而研发的钣金壳体解决方案——用钣金壳体代替原有的铝型材。ZC系列的产品具有价格低、交付周期短等优点。此外，该系列也支持各项定制服务，如颜色、散热孔、面板、UV打印、激光打标等。

This series is 19 inch chassis sheet metal shell, named ZC series, the new ZC series is based on 19 inch chassis and developed sheet metal shell solution - sheet metal shell instead of the original aluminum profile. ZC series products have the advantages of low price and short delivery cycle. In addition, the series also supports various customized services, such as color, heat dissipation holes, panels, UV printing, laser marking, etc.



•铝型材款



•钣金系列

60%

全系产品成本降低近60%  
更具性价比

4种

4种不同高度面板型材  
实现19寸机箱标准高度

20%

设计周期节省近20%  
交付更迅速

1件

全系一件起订  
量小也行

## 产品效果 RENDERINGS



## 爆炸图 EXPLOSIVE VIEW

### 1.上盖板

材质：SPCC  
组成用量：1PCS

### 4.后面板

材质：5052-H32  
组成用量：1PCS

### 2.下盖板

材质：SPCC  
组成用量：1PCS

### 5.侧板连接件

材质：SPCC  
组成用量：2PCS

### 3.前面板

材质：6063-T5  
组成用量：4PCS

### 6.压铆螺母镀白锌

材质：碳钢  
组成用量：4PCS

### 7.M3×6内六角杯头螺丝

材质：碳钢  
组成用量：22PCS

## 物料表 MATERIALS

序号(S/N)	名称(Part Name)	表面处理(Finish)	材料(Material)	数量(QTY)
1	上盖板/Upper Cover	喷涂/spray	SPCC	1
2	下盖板/Bottom Cover	喷涂/spray	SPCC	1
3	前面板/Front Panel	阳极氧化/AO、喷涂/spray	6063-T5	1
4	后面壳/Rear Panel	阳极氧化/AO、喷涂/spray	5052-H32	1
5	侧板连接件/Side Panel Connector	/	SPCC	2
6	压铆螺母镀白锌M3/S-M3-1-ZI	镀锌/galvanization	碳钢/Carbon Stell	4
7	M3×6内六角杯头螺丝/GB-T-70.1-2000-S-NL-M3	镀白镍/White Nickel Plating	碳钢/Carbon Stell	22



产品细节

DETAILS



面板

PANEL



面板定制。产品面板已实现客制化定制服务，客户可以根据自己的实际需求进行设计、制造。

Panel customization. The product panel has been customized service, customers can design and manufacture according to their actual needs.

散热孔

APERTURE ARRAYS



散热孔定制。根据客户产品的散热需求而选择合适的散热孔阵面积，孔阵样式已实现客制化定制服务。

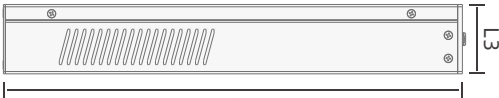
Heat dissipation hole customization. According to the heat dissipation requirements of customers' products, the appropriate heat dissipation hole array area is selected, and the hole array style has been customized.

产品尺寸

SIZES



顶视图



左视图

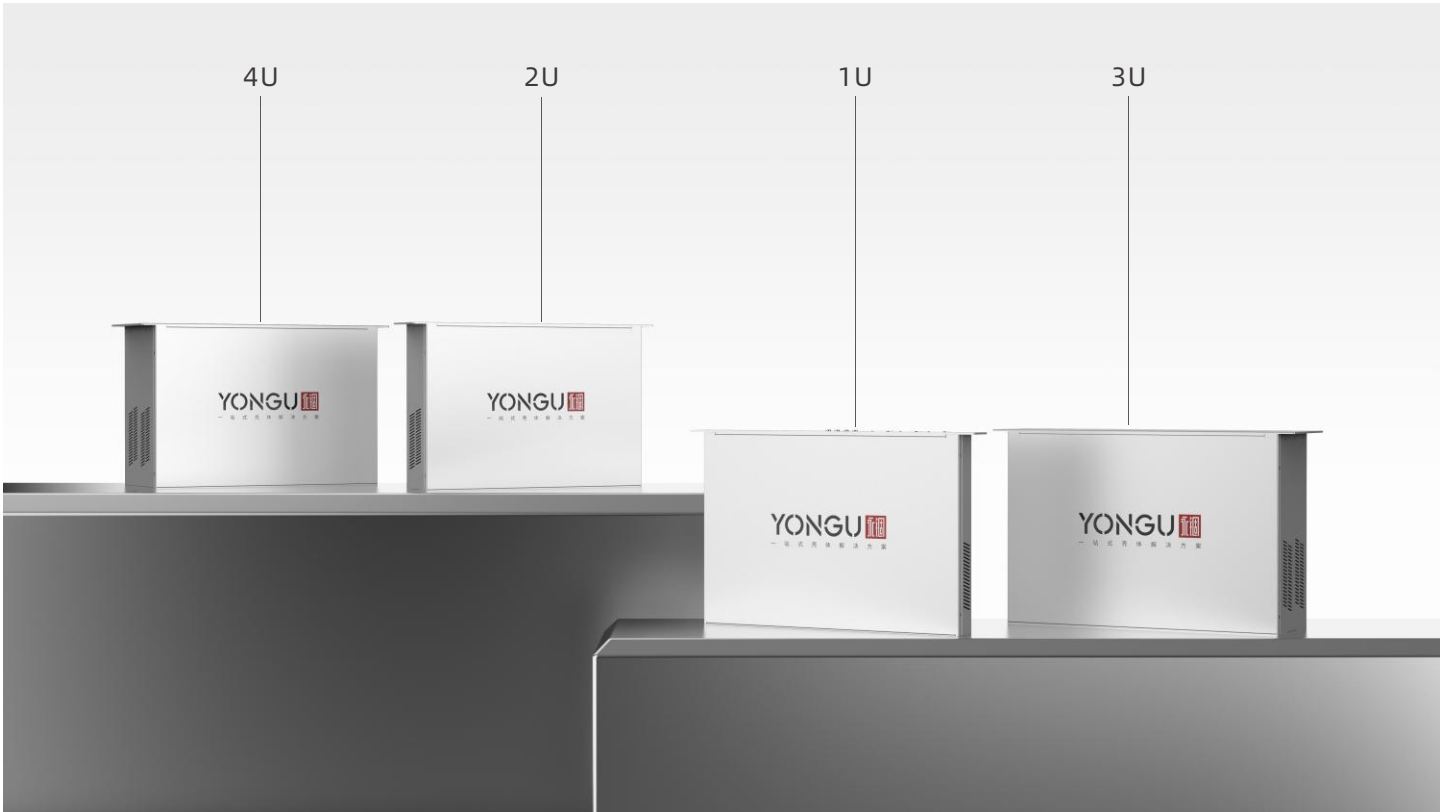
产品参数

PARAMATER

型号	1U	2U	3U	4U
铝板厚度 Sheet Metal Thickness	1.2	1.2	1.2	1.2
面板厚度 Panel Thinckness	3	3	3	3.5
钣金材料 Sheet Metal Material	铝/铁	铝/铁	铝/铁	铝/铁
是否支持C系列配件 C Series Accessories	√	√	√	√
面板尺寸 (L1:L3) Panel Size(L1:L3)	429:42	293:85	293:131	293:175
机箱容量尺寸 Shell Capacity	429:293:42	429:293:85	429:293:131	429:293:175
常备长度尺寸 (L1:L2:L3) Section Width(L1:L2:L3)	482:298:45	482:298:88	482:298:133	482:298:178

系列展示

SIZES



致力为全球电子设备提供一流的壳体解决方案  
We are committed to providing first-class solutions  
for the global electronic equipment shell

FOSHAN NANHAI YONGGU HARDWARE PRODUCTS CO.,LTD.  
The professional Manufacturer in Aluminum Enclosure  
www.yonggubox.com

使命：  
·追求员工物质和精神双幸福  
·致力为全球领先电子设备提供一流的壳体解决方案  
·为客户提升品牌创造价值，为社会进步，科技发展保驾护航

愿景：  
成为客户信赖的全球领先电子设备壳体智造服务商

价值观：  
脚踏实地，一心一意  
·脚踏实地：诚信、敢担当、严谨  
·一心一意：专注、敬业